

Datasheet for ABIN925922
anti-GRHL3 antibody (C-Term)



[Go to Product page](#)

2 Images

Overview

| | |
|----------------------|---|
| Quantity: | 100 µg |
| Target: | GRHL3 |
| Binding Specificity: | C-Term |
| Reactivity: | Human, Dog |
| Host: | Rabbit |
| Clonality: | Polyclonal |
| Conjugate: | This GRHL3 antibody is un-conjugated |
| Application: | Western Blotting (WB), Immunohistochemistry (IHC) |

Product Details

| | |
|-------------------|--|
| Immunogen: | GRHL3 antibody was raised in rabbit using the C terminal of GRHL3 as the immunogen |
| Cross-Reactivity: | Dog (Canine) |

Target Details

| | |
|-------------------|--|
| Target: | GRHL3 |
| Alternative Name: | GRHL3 (GRHL3 Products) |
| Background: | GRHL3 is a member of the grainyhead family of transcription factors. GRHL3 interacts with leader-binding protein 32 (LBP-32) and brother of mammalian grainyhead (BOM), and may function as a transcription factor during development. Multiple transcript variants encoding distinct isoforms have been identified for this gene. This gene encodes a member of the grainyhead family of transcription factors. The encoded protein interacts with leader-binding |

Target Details

protein 32 (LBP-32) and brother of mammalian grainyhead (BOM), and may function as a transcription factor during development. Multiple transcript variants encoding distinct isoforms have been identified for this gene. Synonyms: Polyclonal GRHL3 antibody, Anti-GRHL3 antibody, grainyhead-like 3, Drosophila antibody.

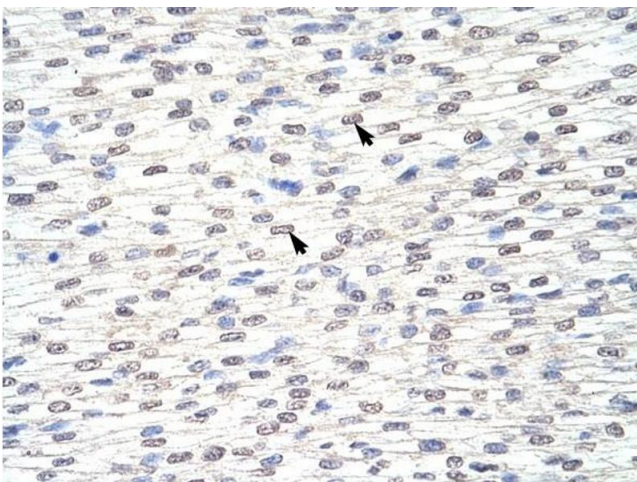
Application Details

| | |
|--------------------|--|
| Application Notes: | Optimal conditions should be determined by the investigator. |
| Comment: | GRHL3 Blocking Peptide, catalog no. 33R-2394, is also available for use as a blocking control in assays to test for specificity of this GRHL3 antibody |
| Restrictions: | For Research Use only |

Handling

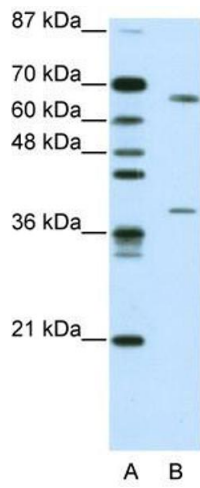
| | |
|------------------|--|
| Format: | Lyophilized |
| Concentration: | Lot specific |
| Buffer: | Lyophilized powder. Add 100 μ L of distilled water. Final antibody concentration is 1 mg/mL in PBS buffer. |
| Handling Advice: | Avoid repeated freeze/thaw cycles. |
| Storage: | 4 °C/-20 °C |
| Storage Comment: | Store at 4 °C, following reconstitution, aliquot and store at -20 °C. |

Images



Immunohistochemistry

Image 1. GRHL3 antibody was used for immunohistochemistry at a concentration of 4-8 μ g/ml to stain Myocardial cells (arrows) in Human Heart. Magnification is at 400X



Western Blotting

Image 2. GRHL3 antibody (20R-1221) used at 0.2-1 ug/ml to detect target protein.