

Datasheet for ABIN925923  
**anti-PRDM13 antibody (C-Term)**



[Go to Product page](#)

1 Image

## Overview

Quantity:	100 µg
Target:	PRDM13
Binding Specificity:	C-Term
Reactivity:	Human, Dog, Mouse, Rat
Host:	Rabbit
Clonality:	Polyclonal
Conjugate:	This PRDM13 antibody is un-conjugated
Application:	Western Blotting (WB)

## Product Details

Immunogen:	PRDM13 antibody was raised in rabbit using the C terminal of PRDM13 as the immunogen
Cross-Reactivity:	Mouse (Murine), Rat (Rattus), Dog (Canine)

## Target Details

Target:	PRDM13
Alternative Name:	PRDM13 ( <a href="#">PRDM13 Products</a> )
Background:	PRDM13 may be involved in transcriptional regulation. Synonyms: Polyclonal PRDM13 antibody, Anti-PRDM13 antibody, PR domain containing 13 antibody.

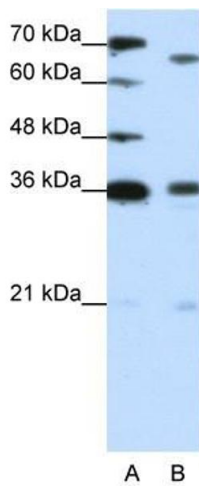
## Application Details

Application Notes:	WB: 1.25 µg/mL Optimal conditions should be determined by the investigator.
Comment:	PRDM13 Blocking Peptide, catalog no. 33R-8606, is also available for use as a blocking control in assays to test for specificity of this PRDM13 antibody
Restrictions:	For Research Use only

## Handling

Format:	Lyophilized
Concentration:	Lot specific
Buffer:	Lyophilized powder. Add 100 µL of distilled water. Final antibody concentration is 1 mg/mL in PBS buffer.
Handling Advice:	Avoid repeated freeze/thaw cycles.
Storage:	4 °C/-20 °C
Storage Comment:	Store at 4 °C, following reconstitution, aliquot and store at -20 °C.

## Images



### Western Blotting

**Image 1.** PRDM13 antibody (20R-1222) used at 1.25 µg/ml to detect target protein.