

Datasheet for ABIN925941  
**anti-HIF3A antibody (C-Term)**



[Go to Product page](#)

2 Images

## Overview

Quantity:	100 µg
Target:	HIF3A
Binding Specificity:	C-Term
Reactivity:	Human
Host:	Rabbit
Clonality:	Polyclonal
Conjugate:	This HIF3A antibody is un-conjugated
Application:	Western Blotting (WB), Immunohistochemistry (IHC)

## Product Details

Immunogen:	HIF3 A antibody was raised in rabbit using the C terminal of HIF3 as the immunogen
------------	--

## Target Details

Target:	HIF3A
Alternative Name:	HIF3A ( <a href="#">HIF3A Products</a> )
Background:	HIF3A is the alpha-3 subunit of one of several alpha/beta-subunit heterodimeric transcription factors that regulate many adaptive responses to low oxygen tension (hypoxia). The alpha-3 subunit lacks the transactivation domain found in factors containing either the alpha-1 or alpha-2 subunits. It is thought that factors containing the alpha-3 subunit are negative regulators of hypoxia-inducible gene expression. Synonyms: Polyclonal HIF3A antibody, Anti-HIF3A antibody, hypoxia inducible factor 3, alpha subunit antibody.

## Target Details

Pathways: [Warburg Effect](#)

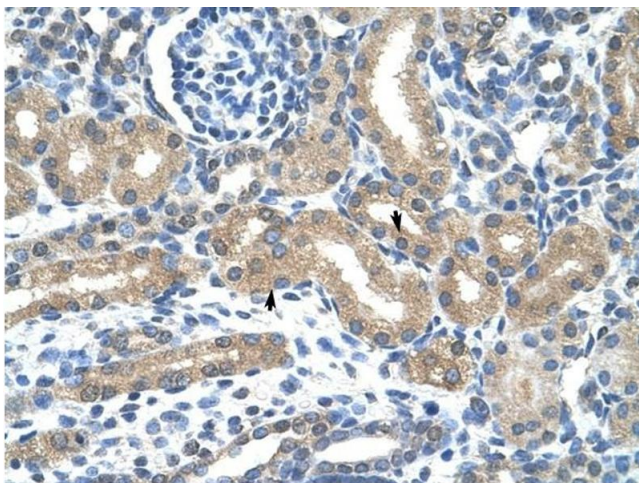
## Application Details

Application Notes:	WB: 1.25 µg/mL Optimal conditions should be determined by the investigator.
Comment:	HIF3A Blocking Peptide, catalog no. 33R-7133, is also available for use as a blocking control in assays to test for specificity of this HIF3A antibody
Restrictions:	For Research Use only

## Handling

Format:	Lyophilized
Concentration:	Lot specific
Buffer:	Lyophilized powder. Add 100 µL of distilled water. Final antibody concentration is 1 mg/mL in PBS buffer.
Handling Advice:	Avoid repeated freeze/thaw cycles.
Storage:	4 °C/-20 °C
Storage Comment:	Store at 4 °C, following reconstitution, aliquot and store at -20 °C.

## Images



### Immunohistochemistry

**Image 1.** HIF3A antibody was used for immunohistochemistry at a concentration of 4-8 µg/ml to stain Epithelial cells of renal tubule (arrows) in Human Kidney. Magnification is at 400X



### Western Blotting

**Image 2.** Western Blot showing HIF3A antibody used at a concentration of 1-2 ug/ml to detect its target protein.