

Datasheet for ABIN925950  
**anti-ZBTB38 antibody (N-Term)**



[Go to Product page](#)

2 Images

## Overview

Quantity:	100 µg
Target:	ZBTB38
Binding Specificity:	N-Term
Reactivity:	Human, Rat, Mouse, Cow, Pig, Chicken
Host:	Rabbit
Clonality:	Polyclonal
Conjugate:	This ZBTB38 antibody is un-conjugated
Application:	Western Blotting (WB), Immunohistochemistry (IHC)

## Product Details

Immunogen:	ZBTB38 antibody was raised in rabbit using the N terminal of ZBTB38 as the immunogen
Cross-Reactivity:	Mouse (Murine), Rat (Rattus), Pig (Porcine), Chicken, Cow (Bovine)

## Target Details

Target:	ZBTB38
Alternative Name:	ZBTB38 ( <a href="#">ZBTB38 Products</a> )
Background:	ZBTB38 contains 10 C2H2-type zinc fingers and 1 BTB (POZ) domain. ZBTB38 acts as a transcriptional activator and may be involved in the differentiation and/or survival of late postmitotic neurons. Synonyms: Polyclonal ZBTB38 antibody, Anti-ZBTB38 antibody, zinc finger and BTB domain containing 38 antibody.

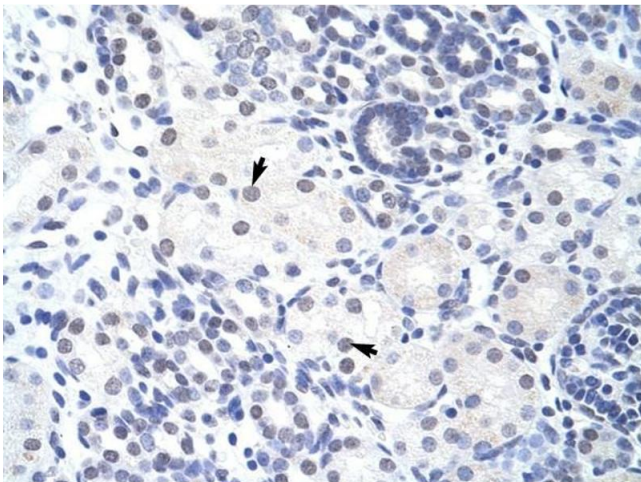
## Application Details

Application Notes:	WB: 2.5 µg/mL Optimal conditions should be determined by the investigator.
Comment:	ZBTB38 Blocking Peptide, catalog no. 33R-6571, is also available for use as a blocking control in assays to test for specificity of this ZBTB38 antibody
Restrictions:	For Research Use only

## Handling

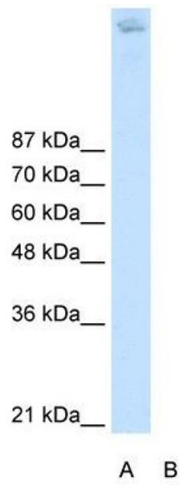
Format:	Lyophilized
Concentration:	Lot specific
Buffer:	Lyophilized powder. Add 100 µL of distilled water. Final antibody concentration is 1 mg/mL in PBS buffer.
Handling Advice:	Avoid repeated freeze/thaw cycles.
Storage:	4 °C/-20 °C
Storage Comment:	Store at 4 °C, following reconstitution, aliquot and store at -20 °C.

## Images



### Immunohistochemistry

**Image 1.** ZBTB38 antibody was used for immunohistochemistry at a concentration of 4-8 µg/ml to stain Epithelial cells of renal tubule (arrows) in Human Kidney. Magnification is at 400X



### Western Blotting

**Image 2.** ZBTB38 antibody (20R-1249) used at 0.2-1 ug/ml to detect target protein.