

Datasheet for ABIN925951
anti-ZFP57 antibody (N-Term)

2 Images



[Go to Product page](#)

Overview

Quantity:	100 µg
Target:	ZFP57
Binding Specificity:	N-Term
Reactivity:	Human
Host:	Rabbit
Clonality:	Polyclonal
Conjugate:	This ZFP57 antibody is un-conjugated
Application:	Western Blotting (WB), Immunohistochemistry (IHC)

Product Details

Immunogen:	ZFP57 antibody was raised in rabbit using the N terminal of ZFP57 as the immunogen
------------	--

Target Details

Target:	ZFP57
Alternative Name:	ZFP57 (ZFP57 Products)
Background:	The protein encoded by this gene is a zinc finger protein containing a KRAB domain. Studies in mouse suggest that this protein may function as a transcriptional repressor. Synonyms: Polyclonal ZFP57 antibody, Anti-ZFP57 antibody, zinc finger protein 57 homolog, mouse antibody.

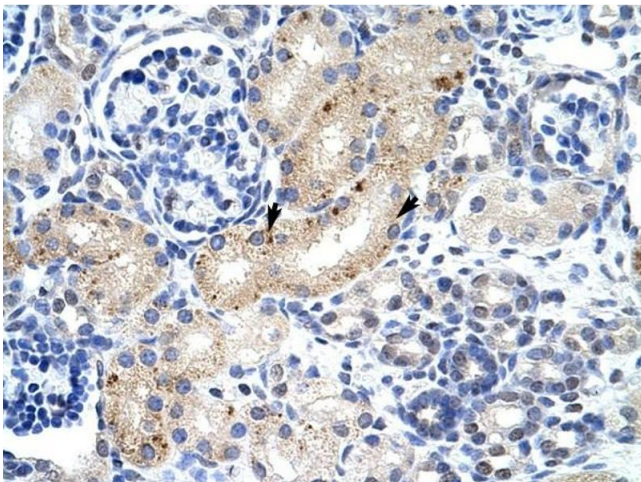
Application Details

Application Notes:	WB: 1.25 µg/mL Optimal conditions should be determined by the investigator.
Comment:	ZFP57 Blocking Peptide, catalog no. 33R-5989, is also available for use as a blocking control in assays to test for specificity of this ZFP57 antibody
Restrictions:	For Research Use only

Handling

Format:	Lyophilized
Concentration:	Lot specific
Buffer:	Lyophilized powder. Add 100 µL of distilled water. Final antibody concentration is 1 mg/mL in PBS buffer.
Handling Advice:	Avoid repeated freeze/thaw cycles.
Storage:	4 °C/-20 °C
Storage Comment:	Store at 4 °C, following reconstitution, aliquot and store at -20 °C.

Images



Immunohistochemistry

Image 1. ZFP57 antibody was used for immunohistochemistry at a concentration of 4-8 ug/ml to stain Epithelial cells of renal tubule (arrows) in Human Kidney. Magnification is at 400X



Western Blotting

Image 2. Western Blot showing ZFP57 antibody used at a concentration of 1-2 ug/ml to detect its target protein.