

Datasheet for ABIN925965 **anti-SETD2 antibody (N-Term)**

3 Images



[Go to Product page](#)

Overview

Quantity:	100 µg
Target:	SETD2
Binding Specificity:	N-Term
Reactivity:	Human, Rat, Dog
Host:	Rabbit
Clonality:	Polyclonal
Conjugate:	This SETD2 antibody is un-conjugated
Application:	Western Blotting (WB), Immunohistochemistry (IHC)

Product Details

Immunogen:	SETD2 antibody was raised in rabbit using the N terminal of SETD2 as the immunogen
Cross-Reactivity:	Rat (Rattus), Dog (Canine)

Target Details

Target:	SETD2
Alternative Name:	SETD2 (SETD2 Products)
Background:	Huntington's disease (HD), a neurodegenerative disorder characterized by loss of striatal neurons, is caused by an expansion of a polyglutamine tract in the HD protein huntingtin. SETD2 is a protein belonging to a class of huntingtin interacting proteins characterized by WW motifs. Synonyms: Polyclonal SETD2 antibody, Anti-SETD2 antibody, SET domain containing 2 antibody, FLJ16420 antibody, FLJ22472 antibody, FLJ23184 antibody, FLJ45883 antibody, HIF-

Target Details

1 antibody, HSPC069 antibody, HYPB antibody, KIAA1732 antibody, KMT3A antibody.

Pathways: [Tube Formation](#)

Application Details

Application Notes: Optimal conditions should be determined by the investigator.

Comment: SETD2 Blocking Peptide, catalog no. 33R-8347, is also available for use as a blocking control in assays to test for specificity of this SETD2 antibody

Restrictions: For Research Use only

Handling

Format: Lyophilized

Concentration: Lot specific

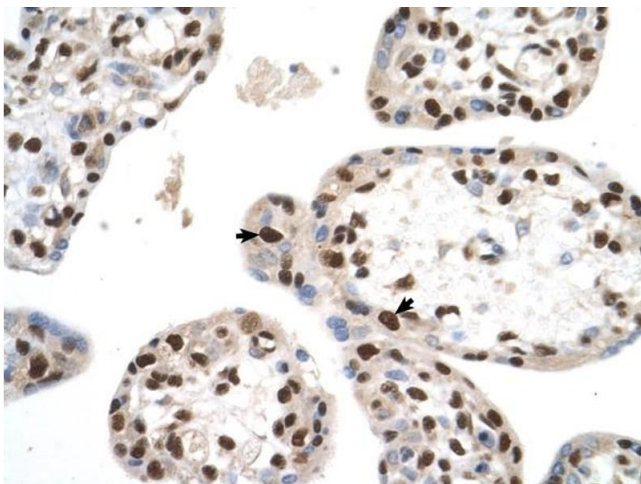
Buffer: Lyophilized powder. Add 100 μ L of distilled water. Final antibody concentration is 1 mg/mL in PBS buffer.

Handling Advice: Avoid repeated freeze/thaw cycles.

Storage: 4 $^{\circ}$ C/-20 $^{\circ}$ C

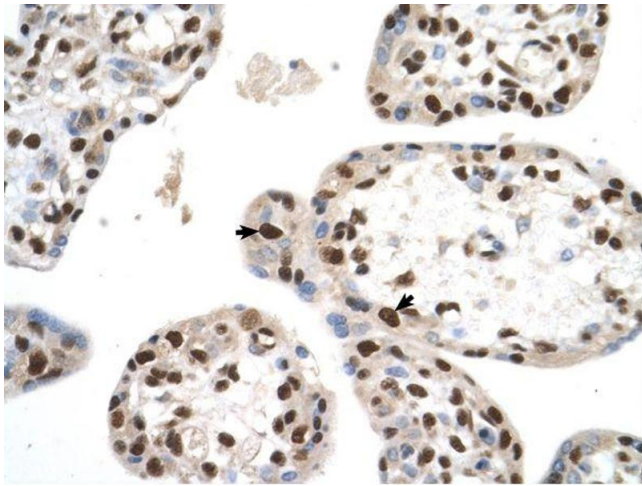
Storage Comment: Store at 4 $^{\circ}$ C, following reconstitution, aliquot and store at -20 $^{\circ}$ C.

Images



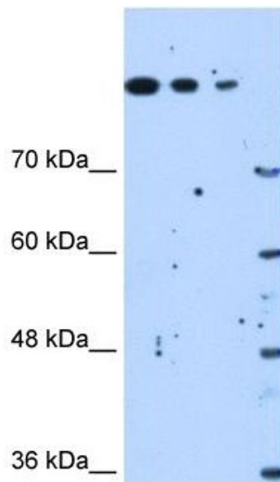
Immunohistochemistry

Image 1. SETD2 antibody was used for immunohistochemistry at a concentration of 4-8 μ g/ml to stain Trophoblast cells (arrows) in Human Placenta. Magnification is at 400X



Immunohistochemistry

Image 2. SETD2 antibody was used for immunohistochemistry at a concentration of 4-8 ug/ml. Magnification is at 400X



Western Blotting

Image 3. Western Blot showing SETD2 antibody used at a concentration of 1.25 ug/ml against HepG2 Cell Lysate