

Datasheet for ABIN925970
anti-TAM41 antibody (N-Term)



[Go to Product page](#)

3 Images

Overview

Quantity:	100 µg
Target:	TAM41 (TAMM41)
Binding Specificity:	N-Term
Reactivity:	Human, Cow
Host:	Rabbit
Clonality:	Polyclonal
Conjugate:	This TAM41 antibody is un-conjugated
Application:	Western Blotting (WB), Immunohistochemistry (IHC)

Product Details

Immunogen:	C3 orf31 antibody was raised in rabbit using the N terminal of C3 RF31 as the immunogen
Cross-Reactivity:	Cow (Bovine)

Target Details

Target:	TAM41 (TAMM41)
Alternative Name:	C3orf31 (TAMM41 Products)
Background:	C3orf31 may be involved in the translocation of transit peptide-containing proteins across the mitochondrial inner membrane. Synonyms: Polyclonal C3orf31 antibody, Anti-C3orf31 antibody, DKFZp434E0519 antibody, MGC16471 antibody.

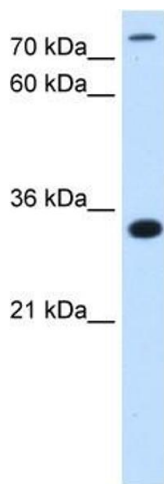
Application Details

Application Notes:	Optimal conditions should be determined by the investigator.
Comment:	C3orf31 Blocking Peptide, catalog no. 33R-7739, is also available for use as a blocking control in assays to test for specificity of this C3orf31 antibody
Restrictions:	For Research Use only

Handling

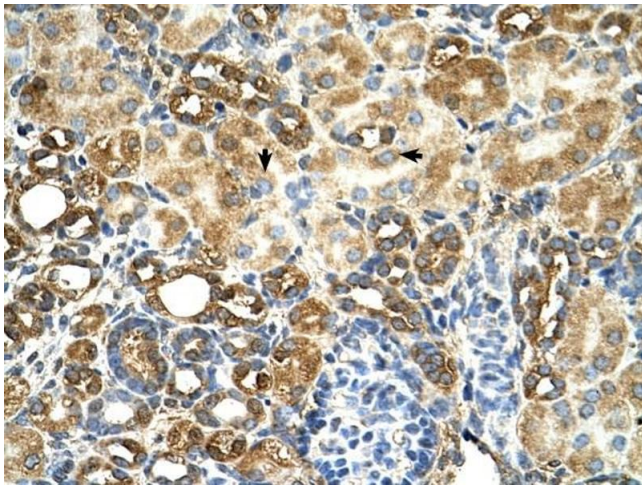
Format:	Lyophilized
Concentration:	Lot specific
Buffer:	Lyophilized powder. Add 100 μ L of distilled water. Final antibody concentration is 1 mg/mL in PBS buffer.
Handling Advice:	Avoid repeated freeze/thaw cycles.
Storage:	4 °C/-20 °C
Storage Comment:	Store at 4 °C, following reconstitution, aliquot and store at -20 °C.

Images



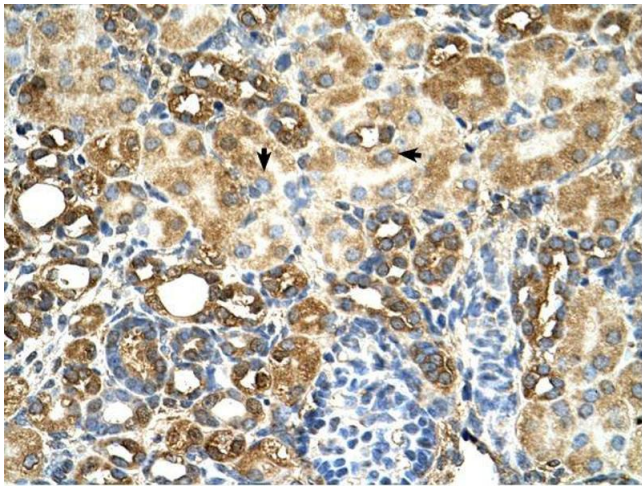
Western Blotting

Image 1. Western Blot showing C3orf31 antibody used at a concentration of 2.5 μ g/ml against HepG2 Cell Lysate



Immunohistochemistry

Image 2. C3orf31 antibody was used for immunohistochemistry at a concentration of 4-8 ug/ml to stain Epithelial cells of renal tubule (arrows) in Human Kidney. Magnification is at 400X



Immunohistochemistry

Image 3. C3orf31 antibody was used for immunohistochemistry at a concentration of 4-8 ug/ml. Magnification is at 400X