

Datasheet for ABIN925971
anti-T-Box 15 antibody (C-Term)



[Go to Product page](#)

3 Images

Overview

Quantity:	100 µg
Target:	T-Box 15 (TBX15)
Binding Specificity:	C-Term
Reactivity:	Human, Mouse, Dog, Rat
Host:	Rabbit
Clonality:	Polyclonal
Conjugate:	This T-Box 15 antibody is un-conjugated
Application:	Western Blotting (WB), Immunohistochemistry (IHC)

Product Details

Immunogen:	TBX15 antibody was raised in rabbit using the C terminal of TBX15 as the immunogen
Cross-Reactivity:	Mouse (Murine), Rat (Rattus), Dog (Canine)

Target Details

Target:	T-Box 15 (TBX15)
Alternative Name:	TBX15 (TBX15 Products)
Background:	TBX15 is a probable transcriptional regulator involved in developmental processes. Synonyms: Polyclonal TBX15 antibody, Anti-TBX15 antibody, T-box 15 antibody, TBX14 antibody.

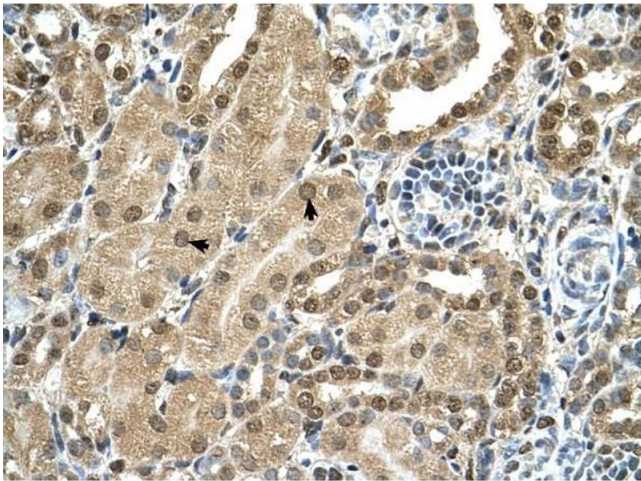
Application Details

Application Notes:	Optimal conditions should be determined by the investigator.
Comment:	TBX15 Blocking Peptide, catalog no. 33R-10115, is also available for use as a blocking control in assays to test for specificity of this TBX15 antibody
Restrictions:	For Research Use only

Handling

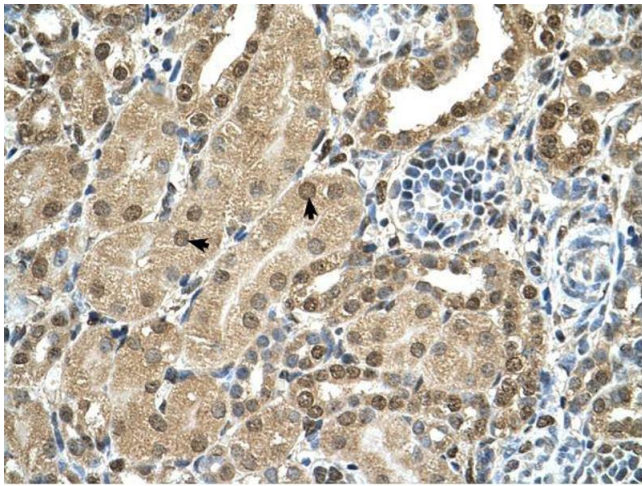
Format:	Lyophilized
Concentration:	Lot specific
Buffer:	Lyophilized powder. Add 100 μ L of distilled water. Final antibody concentration is 1 mg/mL in PBS buffer.
Handling Advice:	Avoid repeated freeze/thaw cycles.
Storage:	4 °C/-20 °C
Storage Comment:	Store at 4 °C, following reconstitution, aliquot and store at -20 °C.

Images



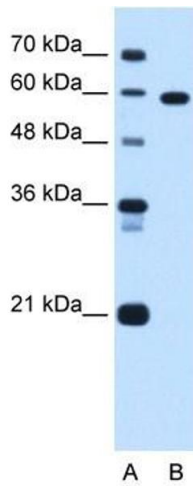
Immunohistochemistry

Image 1. TBX15 antibody was used for immunohistochemistry at a concentration of 4-8 μ g/ml to stain Epithelial cells of renal tubule (arrows) in Human Kidney. Magnification is at 400X



Immunohistochemistry

Image 2. TBX15 antibody was used for immunohistochemistry at a concentration of 4-8 ug/ml. Magnification is at 400X



Western Blotting

Image 3. Western Blot showing TBX15 antibody used at a concentration of 1.25 ug/ml against Jurkat Cell Lysate