

Datasheet for ABIN925979 **anti-PHF6 antibody (Middle Region)**



[Go to Product page](#)

1 Image

Overview

Quantity:	100 µg
Target:	PHF6
Binding Specificity:	Middle Region
Reactivity:	Human, Mouse, Dog, Cow, Rat, Chicken
Host:	Rabbit
Clonality:	Polyclonal
Conjugate:	This PHF6 antibody is un-conjugated
Application:	Western Blotting (WB)

Product Details

Immunogen:	PHF6 antibody was raised in rabbit using the middle region of PHF6 as the immunogen
Cross-Reactivity:	Dog (Canine), Rat (Rattus), Mouse (Murine), Chicken, Cow (Bovine)

Target Details

Target:	PHF6
Alternative Name:	PHF6 (PHF6 Products)
Background:	<p>PHF6 is a member of the plant homeodomain (PHD)-like finger (PHF) family. PHF6 is a protein with two PHD-type zinc finger domains, indicating a potential role in transcriptional regulation, that localizes to the nucleolus. Mutations affecting the coding region of its gene or the splicing of the transcript have been associated with Borjeson-Forssman-Lehmann syndrome (BFLS).</p> <p>Synonyms: Polyclonal PHF6 antibody, Anti-PHF6 antibody, PHD finger protein 6 antibody, BORJ</p>

Target Details

antibody, MGC14797 antibody.

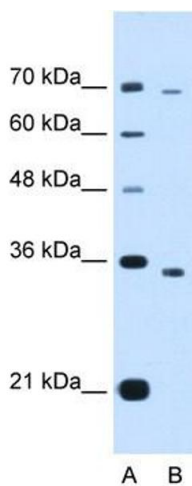
Application Details

Application Notes:	WB: 1.25 µg/mL Optimal conditions should be determined by the investigator.
Comment:	PHF6 Blocking Peptide, catalog no. 33R-4920, is also available for use as a blocking control in assays to test for specificity of this PHF6 antibody
Restrictions:	For Research Use only

Handling

Format:	Lyophilized
Concentration:	Lot specific
Buffer:	Lyophilized powder. Add 100 µL of distilled water. Final antibody concentration is 1 mg/mL in PBS buffer.
Handling Advice:	Avoid repeated freeze/thaw cycles.
Storage:	4 °C/-20 °C
Storage Comment:	Store at 4 °C, following reconstitution, aliquot and store at -20 °C.

Images



Western Blotting

Image 1. PHF6 antibody (20R-1278) used at 0.2-1 µg/ml to detect target protein.