

## Datasheet for ABIN925989 **anti-DIABLO antibody (C-Term)**



[Go to Product page](#)

### 1 Image

#### Overview

Quantity:	100 µg
Target:	DIABLO
Binding Specificity:	C-Term
Reactivity:	Human, Cow, Dog, Pig
Host:	Rabbit
Clonality:	Polyclonal
Conjugate:	This DIABLO antibody is un-conjugated
Application:	Western Blotting (WB)

#### Product Details

Immunogen:	DIABLO antibody was raised in rabbit using the C terminal of DIABLO as the immunogen
Cross-Reactivity:	Dog (Canine), Pig (Porcine), Cow (Bovine)

#### Target Details

Target:	DIABLO
Alternative Name:	DIABLO ( <a href="#">DIABLO Products</a> )
Background:	DIABLO is an inhibitor of apoptosis protein (IAP)-binding protein. The encoded mitochondrial protein enters the cytosol when cells undergo apoptosis, and it moderates the caspase inhibition of IAPs. Multiple polyadenylation sites have been found for this gene. Several alternatively spliced transcript variants that encode distinct isoforms have been described for this gene but the validity of some transcripts, and their predicted ORFs, has not been

## Target Details

determined conclusively. Synonyms: Polyclonal DIABLO antibody, Anti-DIABLO antibody, diablo homolog, Drosophila antibody.

Pathways: [Apoptosis, Caspase Cascade in Apoptosis, Positive Regulation of Endopeptidase Activity](#)

## Application Details

Application Notes: WB: 0.3125 µg/mL  
Optimal conditions should be determined by the investigator.

Comment: DIABLO Blocking Peptide, catalog no. 33R-5520, is also available for use as a blocking control in assays to test for specificity of this DIABLO antibody

Restrictions: For Research Use only

## Handling

Format: Lyophilized

Concentration: Lot specific

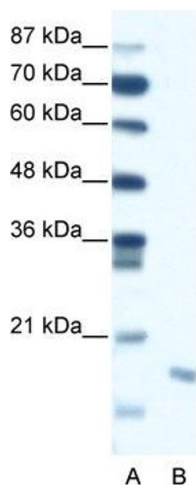
Buffer: Lyophilized powder. Add 100 µL of distilled water. Final antibody concentration is 1 mg/mL in PBS buffer.

Handling Advice: Avoid repeated freeze/thaw cycles.

Storage: 4 °C/-20 °C

Storage Comment: Store at 4 °C, following reconstitution, aliquot and store at -20 °C.

## Images



### Western Blotting

**Image 1.** DIABLO antibody (20R-1288) used at 0.2-1 µg/ml to detect target protein.