

Datasheet for ABIN926003

anti-Cullin 1 antibody (C-Term)



[Go to Product page](#)

1 Image

Overview

Quantity:	100 µg
Target:	Cullin 1 (CUL1)
Binding Specificity:	C-Term
Reactivity:	Human, Mouse, Rat, Chicken, Zebrafish (Danio rerio), Dog, Xenopus laevis
Host:	Rabbit
Clonality:	Polyclonal
Conjugate:	This Cullin 1 antibody is un-conjugated
Application:	Western Blotting (WB)

Product Details

Immunogen:	CUL1 antibody was raised in rabbit using the C terminal of CUL1 as the immunogen
Cross-Reactivity:	Mouse (Murine), Rat (Rattus), Zebrafish (Brachydanio rerio), Frog, Chicken, Dog (Canine)

Target Details

Target:	Cullin 1 (CUL1)
Alternative Name:	CUL1 (CUL1 Products)
Background:	Cul1 may contribute to catalysis through the positioning of the substrate and the ubiquitin-conjugating enzyme. Synonyms: Polyclonal CUL1 antibody, Anti-CUL1 antibody, cullin 1 antibody.
Pathways:	Cell Division Cycle , Hedgehog Signaling , Mitotic G1-G1/S Phases , Regulation of Cell Size

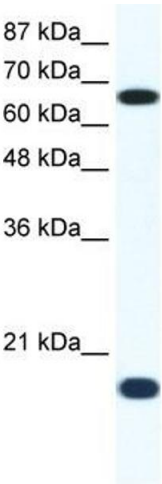
Application Details

Application Notes:	WB: 1.25 µg/mL Optimal conditions should be determined by the investigator.
Comment:	CUL1 Blocking Peptide, catalog no. 33R-3827, is also available for use as a blocking control in assays to test for specificity of this CUL1 antibody
Restrictions:	For Research Use only

Handling

Format:	Lyophilized
Concentration:	Lot specific
Buffer:	Lyophilized powder. Add 100 µL of distilled water. Final antibody concentration is 1 mg/mL in PBS buffer.
Handling Advice:	Avoid repeated freeze/thaw cycles.
Storage:	4 °C/-20 °C
Storage Comment:	Store at 4 °C, following reconstitution, aliquot and store at -20 °C.

Images



Western Blotting

Image 1. Western Blot showing CUL1 antibody used at a concentration of 1-2 ug/ml to detect its target protein.