

## Datasheet for ABIN926014 **anti-MMP10 antibody (N-Term)**



[Go to Product page](#)

### 1 Image

#### Overview

Quantity:	100 µg
Target:	MMP10
Binding Specificity:	N-Term
Reactivity:	Human
Host:	Rabbit
Clonality:	Polyclonal
Conjugate:	This MMP10 antibody is un-conjugated
Application:	Western Blotting (WB)

#### Product Details

Immunogen: MMP10 antibody was raised in rabbit using the N terminal of MMP10 as the immunogen

#### Target Details

Target:	MMP10
Alternative Name:	MMP10 ( <a href="#">MMP10 Products</a> )
Background:	Proteins of the matrix metalloproteinase (MMP) family are involved in the breakdown of extracellular matrix in normal physiological processes, such as embryonic development, reproduction, and tissue remodeling, as well as in disease processes, such as arthritis and metastasis. Most MMP's are secreted as inactive proproteins which are activated when cleaved by extracellular proteinases. The enzyme encoded by this gene degrades proteoglycans and fibronectin. The gene is part of a cluster of MMP genes which localize to chromosome 11q22.3.

## Target Details

Synonyms: Polyclonal MMP10 antibody, Anti-MMP10 antibody, matrix metalloproteinase 10, stromelysin 2 antibody.

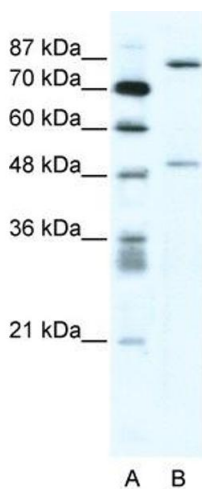
## Application Details

Application Notes:	WB: 2.5 µg/mL Optimal conditions should be determined by the investigator.
Comment:	MMP10 Blocking Peptide, catalog no. 33R-6231, is also available for use as a blocking control in assays to test for specificity of this MMP10 antibody
Restrictions:	For Research Use only

## Handling

Format:	Lyophilized
Concentration:	Lot specific
Buffer:	Lyophilized powder. Add 100 µL of distilled water. Final antibody concentration is 1 mg/mL in PBS buffer.
Handling Advice:	Avoid repeated freeze/thaw cycles.
Storage:	4 °C/-20 °C
Storage Comment:	Store at 4 °C, following reconstitution, aliquot and store at -20 °C.

## Images



### Western Blotting

**Image 1.** MMP10 antibody (20R-1313) used at 0.12 µg/ml to detect target protein.