

Datasheet for ABIN926022
anti-CCR8 antibody (Middle Region)



[Go to Product page](#)

1 Image

Overview

Quantity:	100 µg
Target:	CCR8
Binding Specificity:	Middle Region
Reactivity:	Human, Cow
Host:	Rabbit
Clonality:	Polyclonal
Conjugate:	This CCR8 antibody is un-conjugated
Application:	Western Blotting (WB)

Product Details

Immunogen:	CCR8 antibody was raised in rabbit using the middle region of CCR8 as the immunogen
Cross-Reactivity:	Cow (Bovine)

Target Details

Target:	CCR8
Alternative Name:	CCR8 (CCR8 Products)
Background:	CCR8 is a member of the beta chemokine receptor family, which is predicted to be a seven transmembrane protein similar to G protein-coupled receptors. Chemokines and their receptors are important for the migration of various cell types into the inflammatory sites. This receptor protein preferentially expresses in the thymus. I-309, thymus activation-regulated cytokine (TARC) and macrophage inflammatory protein-1 beta (MIP-1 beta) have been identified as

Target Details

ligands of this receptor. Synonyms: Polyclonal CCR8 antibody, Anti-CCR8 antibody, chemokine, C-C motif receptor 8 antibody.

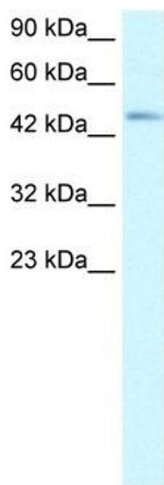
Application Details

Application Notes:	WB: 2.5 µg/mL Optimal conditions should be determined by the investigator.
Comment:	CCR8 Blocking Peptide, catalog no. 33R-5776, is also available for use as a blocking control in assays to test for specificity of this CCR8 antibody
Restrictions:	For Research Use only

Handling

Format:	Lyophilized
Concentration:	Lot specific
Buffer:	Lyophilized powder. Add 100 µL of distilled water. Final antibody concentration is 1 mg/mL in PBS buffer.
Handling Advice:	Avoid repeated freeze/thaw cycles.
Storage:	4 °C/-20 °C
Storage Comment:	Store at 4 °C, following reconstitution, aliquot and store at -20 °C.

Images



Western Blotting

Image 1. CCR8 antibody (20R-1321) used at 5 ug/ml to detect target protein.