

Datasheet for ABIN926025 **anti-CHRN2 antibody (N-Term)**



[Go to Product page](#)

1 Image

Overview

Quantity:	100 µg
Target:	CHRN2
Binding Specificity:	N-Term
Reactivity:	Human, Mouse, Rat, Dog
Host:	Rabbit
Clonality:	Polyclonal
Conjugate:	This CHRN2 antibody is un-conjugated
Application:	Western Blotting (WB)

Product Details

Immunogen:	CHRN2 antibody was raised in rabbit using the N terminal of CHRN2 as the immunogen
Cross-Reactivity:	Mouse (Murine), Rat (Rattus), Dog (Canine)

Target Details

Target:	CHRN2
Alternative Name:	CHRN2 (CHRN2 Products)
Background:	The nicotinic acetylcholine receptors are members of a superfamily of ligand-gated ion channels that mediate fast signal transmission at synapses. Mutations in neuronal nicotinic acetylcholine receptor beta 2 subunit have been associated with autosomal dominant nocturnal frontal lobe epilepsies. Synonyms: Polyclonal CHRN2 antibody, Anti-CHRN2 antibody, cholinergic receptor, nicotinic, beta 2, neuronal antibody.

Target Details

Pathways: [Sensory Perception of Sound, Feeding Behaviour](#)

Application Details

Application Notes: Optimal conditions should be determined by the investigator.

Comment: CHRNB2 Blocking Peptide, catalog no. 33R-8504, is also available for use as a blocking control in assays to test for specificity of this CHRNB2 antibody

Restrictions: For Research Use only

Handling

Format: Lyophilized

Concentration: Lot specific

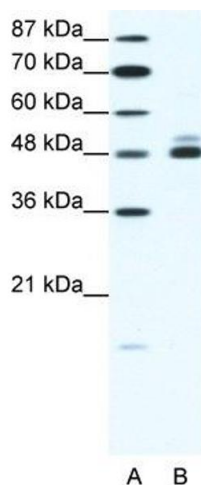
Buffer: Lyophilized powder. Add 100 μ L of distilled water. Final antibody concentration is 1 mg/mL in PBS buffer.

Handling Advice: Avoid repeated freeze/thaw cycles.

Storage: 4 °C/-20 °C

Storage Comment: Store at 4 °C, following reconstitution, aliquot and store at -20 °C.

Images



Western Blotting

Image 1. CHRNB2 antibody (20R-1324) used at 2.5 μ g/ml to detect target protein.