

## Datasheet for ABIN926026 **anti-CHRND antibody (N-Term)**



[Go to Product page](#)

### 1 Image

#### Overview

Quantity:	100 µg
Target:	CHRND
Binding Specificity:	N-Term
Reactivity:	Human, Dog
Host:	Rabbit
Clonality:	Polyclonal
Conjugate:	This CHRND antibody is un-conjugated
Application:	Western Blotting (WB)

#### Product Details

Immunogen:	CHRND antibody was raised in rabbit using the N terminal of CHRND as the immunogen
Cross-Reactivity:	Dog (Canine)

#### Target Details

Target:	CHRND
Alternative Name:	CHRND ( <a href="#">CHRND Products</a> )
Background:	The acetylcholine receptor of muscle has 5 subunits of 4 different types: 2 alpha and 1 each of beta, gamma and delta subunits. After acetylcholine binding, the receptor undergoes an extensive conformation change that affects all subunits and leads to opening of an ion-conducting channel across the plasma membrane. Synonyms: Polyclonal CHRND antibody, Anti-CHRND antibody, cholinergic receptor, nicotinic, delta antibody.

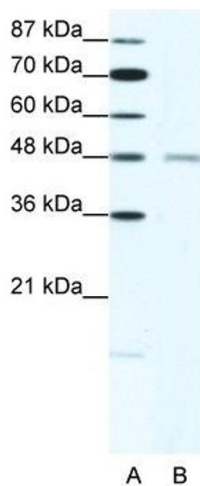
## Application Details

Application Notes:	Optimal conditions should be determined by the investigator.
Comment:	CHRND Blocking Peptide, catalog no. 33R-5479, is also available for use as a blocking control in assays to test for specificity of this CHRND antibody
Restrictions:	For Research Use only

## Handling

Format:	Lyophilized
Concentration:	Lot specific
Buffer:	Lyophilized powder. Add 100 $\mu$ L of distilled water. Final antibody concentration is 1 mg/mL in PBS buffer.
Handling Advice:	Avoid repeated freeze/thaw cycles.
Storage:	4 °C/-20 °C
Storage Comment:	Store at 4 °C, following reconstitution, aliquot and store at -20 °C.

## Images



### Western Blotting

**Image 1.** CHRND antibody (20R-1325) used at 1.25  $\mu$ g/ml to detect target protein.