

Datasheet for ABIN926028 **anti-CHRNA3 antibody (N-Term)**



[Go to Product page](#)

1 Image

Overview

Quantity:	100 µg
Target:	CHRNA3
Binding Specificity:	N-Term
Reactivity:	Human, Dog
Host:	Rabbit
Clonality:	Polyclonal
Conjugate:	This CHRNA3 antibody is un-conjugated
Application:	Western Blotting (WB)

Product Details

Immunogen:	CHRNA3 antibody was raised in rabbit using the N terminal of CHRNA3 as the immunogen
Cross-Reactivity:	Dog (Canine)

Target Details

Target:	CHRNA3
Alternative Name:	CHRNA3 (CHRNA3 Products)
Background:	The CHRNA3 subunit is expressed in the soma of the majority of pyramidal cells, with the most alpha 3 immunoreactivity observed in CA2-4 and entorhinal cortex and relatively less in CA1 and subicular pyramidal cell soma. Synonyms: Polyclonal CHRNA3 antibody, Anti-CHRNA3 antibody, cholinergic receptor, nicotinic, alpha 3 antibody.
Pathways:	Synaptic Membrane

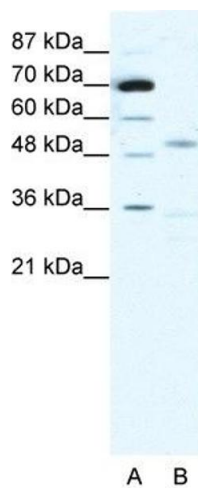
Application Details

Application Notes:	WB: 1 µg/mL Optimal conditions should be determined by the investigator.
Comment:	CHRNA3 Blocking Peptide, catalog no. 33R-7520, is also available for use as a blocking control in assays to test for specificity of this CHRNA3 antibody
Restrictions:	For Research Use only

Handling

Format:	Lyophilized
Concentration:	Lot specific
Buffer:	Lyophilized powder. Add 100 µL of distilled water. Final antibody concentration is 1 mg/mL in PBS buffer.
Handling Advice:	Avoid repeated freeze/thaw cycles.
Storage:	4 °C/-20 °C
Storage Comment:	Store at 4 °C, following reconstitution, aliquot and store at -20 °C.

Images



Western Blotting

Image 1. CHRNA3 antibody (20R-1327) used at 1.25 µg/ml to detect target protein.