

Datasheet for ABIN926029  
**anti-GABRA2 antibody (Middle Region)**



[Go to Product page](#)

1 Image

## Overview

Quantity:	100 µg
Target:	GABRA2
Binding Specificity:	Middle Region
Reactivity:	Human, Mouse, Rat, Dog, Cow, Xenopus laevis
Host:	Rabbit
Clonality:	Polyclonal
Conjugate:	This GABRA2 antibody is un-conjugated
Application:	Western Blotting (WB)

## Product Details

Immunogen:	GABRA2 antibody was raised in rabbit using the middle region of GABRA2 as the immunogen
Cross-Reactivity:	Mouse (Murine), Rat (Rattus), Dog (Canine), Cow (Bovine), Frog

## Target Details

Target:	GABRA2
Alternative Name:	GABRA2 ( <a href="#">GABRA2 Products</a> )
Background:	GABA, the major inhibitory neurotransmitter in the vertebrate brain, mediates neuronal inhibition by binding to the gaba/benzodiazepine receptor and opening an integral chloride channel. Synonyms: Polyclonal GABRA2 antibody, Anti-GABRA2 antibody, gamma-aminobutyric acid, GABA A receptor, alpha 2 antibody.

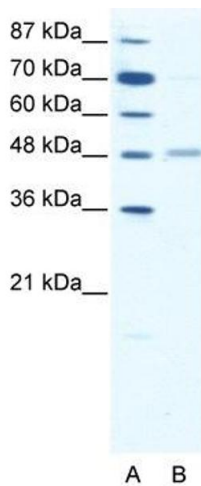
## Application Details

Application Notes:	WB: 1.25 µg/mL Optimal conditions should be determined by the investigator.
Comment:	GABRA2 Blocking Peptide, catalog no. 33R-7220, is also available for use as a blocking control in assays to test for specificity of this GABRA2 antibody
Restrictions:	For Research Use only

## Handling

Format:	Lyophilized
Concentration:	Lot specific
Buffer:	Lyophilized powder. Add 100 µL of distilled water. Final antibody concentration is 1 mg/mL in PBS buffer.
Handling Advice:	Avoid repeated freeze/thaw cycles.
Storage:	4 °C/-20 °C
Storage Comment:	Store at 4 °C, following reconstitution, aliquot and store at -20 °C.

## Images



### Western Blotting

**Image 1.** GABRA2 antibody (20R-1328) used at 0.2-1 µg/ml to detect target protein.