

Datasheet for ABIN926041
anti-PACSIN1 antibody (C-Term)



[Go to Product page](#)

1 Image

Overview

Quantity:	100 µg
Target:	PACSIN1
Binding Specificity:	C-Term
Reactivity:	Human, Mouse, Rat, Dog, Cow
Host:	Rabbit
Clonality:	Polyclonal
Conjugate:	This PACSIN1 antibody is un-conjugated
Application:	Western Blotting (WB)

Product Details

Immunogen:	PACSIN1 antibody was raised in rabbit using the C terminal of PACSIN1 as the immunogen
Cross-Reactivity:	Mouse (Murine), Rat (Rattus), Cow (Bovine), Dog (Canine)

Target Details

Target:	PACSIN1
Alternative Name:	PACSIN1 (PACSIN1 Products)
Background:	PACSIN1 may play a role in vesicle formation and transport. Synonyms: Polyclonal PACSIN1 antibody, Anti-PACSIN1 antibody, protein kinase C and casein kinase substrate in neurons 1 antibody, KIAA1379 antibody.

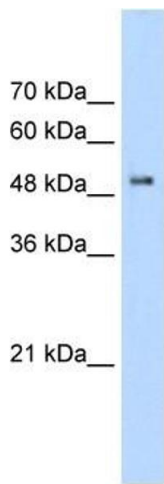
Application Details

Application Notes:	WB: 2.5 µg/mL Optimal conditions should be determined by the investigator.
Comment:	PACSIN1 Blocking Peptide, catalog no. 33R-3866, is also available for use as a blocking control in assays to test for specificity of this PACSIN1 antibody
Restrictions:	For Research Use only

Handling

Format:	Lyophilized
Concentration:	Lot specific
Buffer:	Lyophilized powder. Add 100 µL of distilled water. Final antibody concentration is 1 mg/mL in PBS buffer.
Handling Advice:	Avoid repeated freeze/thaw cycles.
Storage:	4 °C/-20 °C
Storage Comment:	Store at 4 °C, following reconstitution, aliquot and store at -20 °C.

Images



Western Blotting

Image 1. PACSIN1 antibody (20R-1340) used at 0.2-1 µg/ml to detect target protein.