

Datasheet for ABIN926044  
**anti-RAB3D antibody (C-Term)**



[Go to Product page](#)

1 Image

## Overview

Quantity:	100 µg
Target:	RAB3D
Binding Specificity:	C-Term
Reactivity:	Human, Mouse, Rat, Cow
Host:	Rabbit
Clonality:	Polyclonal
Conjugate:	This RAB3D antibody is un-conjugated
Application:	Western Blotting (WB)

## Product Details

Immunogen:	RAB3 D antibody was raised in rabbit using the C terminal of RAB3 as the immunogen
Cross-Reactivity:	Mouse (Murine), Rat (Rattus), Cow (Bovine)

## Target Details

Target:	RAB3D
Alternative Name:	RAB3D ( <a href="#">RAB3D Products</a> )
Background:	As a protein transport, RAB3D is probably involved in regulated exocytosis. Synonyms: Polyclonal RAB3D antibody, Anti-RAB3D antibody, RAB3D, member RAS oncogene family antibody, D2-2 antibody, GOV antibody, RAB16 antibody, RAD3D antibody.

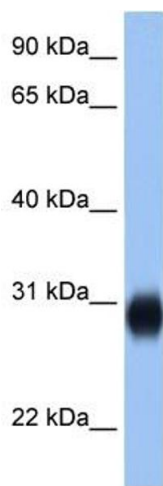
## Application Details

Application Notes:	WB: 2.5 µg/mL Optimal conditions should be determined by the investigator.
Comment:	RAB3D Blocking Peptide, catalog no. 33R-4346, is also available for use as a blocking control in assays to test for specificity of this RAB3D antibody
Restrictions:	For Research Use only

## Handling

Format:	Lyophilized
Concentration:	Lot specific
Buffer:	Lyophilized powder. Add 100 µL of distilled water. Final antibody concentration is 1 mg/mL in PBS buffer.
Handling Advice:	Avoid repeated freeze/thaw cycles.
Storage:	4 °C/-20 °C
Storage Comment:	Store at 4 °C, following reconstitution, aliquot and store at -20 °C.

## Images



### Western Blotting

**Image 1.** RAB3D antibody (20R-1343) used at 0.2-1 µg/ml to detect target protein.