

Datasheet for ABIN926049 **anti-GDI1 antibody (C-Term)**



[Go to Product page](#)

1 Image

Overview

Quantity:	100 µg
Target:	GDI1
Binding Specificity:	C-Term
Reactivity:	Human, Mouse, Rat, Cow, Dog, Xenopus laevis
Host:	Rabbit
Clonality:	Polyclonal
Conjugate:	This GDI1 antibody is un-conjugated
Application:	Western Blotting (WB)

Product Details

Immunogen:	GDI1 antibody was raised in rabbit using the C terminal of GDI1 as the immunogen
Cross-Reactivity:	Mouse (Murine), Rat (Rattus), Dog (Canine), Cow (Bovine), Frog

Target Details

Target:	GDI1
Alternative Name:	GDI1 (GDI1 Products)
Background:	GDP dissociation inhibitors are proteins that regulate the GDP-GTP exchange reaction of members of the rab family, small GTP-binding proteins of the ras superfamily, that are involved in vesicular trafficking of molecules between cellular organelles. GDIs slow the rate of dissociation of GDP from rab proteins and release GDP from membrane-bound rabs. GDI1 is expressed primarily in neural and sensory tissues. Mutations in GDI1 have been linked to X-

Target Details

linked nonspecific mental retardation. Synonyms: Polyclonal GDI1 antibody, Anti-GDI1 antibody, GDP dissociation inhibitor 1 antibody.

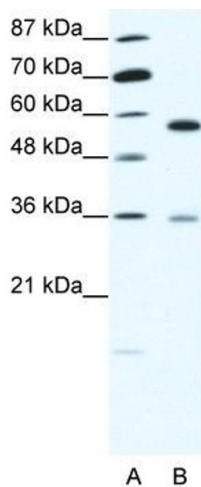
Application Details

Application Notes:	WB: 1.25 µg/mL Optimal conditions should be determined by the investigator.
Comment:	GDI1 Blocking Peptide, catalog no. 33R-9520, is also available for use as a blocking control in assays to test for specificity of this GDI1 antibody
Restrictions:	For Research Use only

Handling

Format:	Lyophilized
Concentration:	Lot specific
Buffer:	Lyophilized powder. Add 100 µL of distilled water. Final antibody concentration is 1 mg/mL in PBS buffer.
Handling Advice:	Avoid repeated freeze/thaw cycles.
Storage:	4 °C/-20 °C
Storage Comment:	Store at 4 °C, following reconstitution, aliquot and store at -20 °C.

Images



Western Blotting

Image 1. GDI1 antibody (20R-1348) used at 0.2-1 ug/ml to detect target protein.