

Datasheet for ABIN926424
anti-CYP51A1 antibody (N-Term)



[Go to Product page](#)

1 Image

Overview

Quantity:	100 µL
Target:	CYP51A1
Binding Specificity:	N-Term
Reactivity:	Human
Host:	Rabbit
Clonality:	Polyclonal
Conjugate:	This CYP51A1 antibody is un-conjugated
Application:	Western Blotting (WB)

Product Details

Immunogen:	CYP51 A1 antibody was raised in rabbit using the N terminal of CYP51 1 as the immunogen
Purification:	Purified

Target Details

Target:	CYP51A1
Alternative Name:	CYP51A1 (CYP51A1 Products)
Background:	This gene encodes a member of the cytochrome P450 superfamily of enzymes. The cytochrome P450 proteins are monooxygenases which catalyze many reactions involved in drug metabolism and synthesis of cholesterol, steroids and other lipids. This endoplasmic reticulum protein participates in the synthesis of cholesterol by catalyzing the removal of the 14alpha-methyl group from lanosterol. Homologous genes are found in all three eukaryotic

Target Details

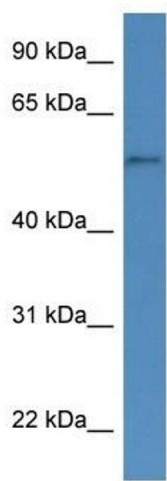
phyla, fungi, plants, and animals, suggesting that this is one of the oldest cytochrome P450 genes. Two transcript variants encoding different isoforms have been found for this gene.
Synonyms: Polyclonal CYP51A1 antibody, Anti-CYP51A1 antibody, cytochrome P450, family 51, subfamily A, polypeptide 1 antibody, CP51 antibody, CYP51 antibody, CYPL1 antibody, LDM antibody, P450-14DM antibody, P450L1 antibody.

Application Details

Application Notes:	WB: 0.2-1 µg/mL Optimal conditions should be determined by the investigator.
Comment:	CYP51A1 Blocking Peptide, catalog no. 33R-9393, is also available for use as a blocking control in assays to test for specificity of this CYP51A1 antibody
Restrictions:	For Research Use only

Handling

Format:	Lyophilized
Concentration:	Lot specific
Buffer:	Lyophilized powder. Add 50 µL of distilled water. Final antibody concentration is 1 mg/mL in PBS buffer.
Handling Advice:	Avoid repeated freeze/thaw cycles.
Storage:	4 °C/-20 °C
Storage Comment:	Store at 4 °C, following reconstitution, aliquot and store at -20 °C.



Western Blotting

Image 1. Western Blot showing CYP51A1 antibody used at a concentration of 1-2 ug/ml to detect its target protein.