

Datasheet for ABIN926426 **anti-DDB2 antibody (C-Term)**



[Go to Product page](#)

1 Image

Overview

Quantity:	100 µL
Target:	DDB2
Binding Specificity:	C-Term
Reactivity:	Human
Host:	Rabbit
Clonality:	Polyclonal
Conjugate:	This DDB2 antibody is un-conjugated
Application:	Western Blotting (WB)

Product Details

Immunogen:	DDB2 antibody was raised in rabbit using the C terminal of DDB2 as the immunogen
Purification:	Purified

Target Details

Target:	DDB2
Alternative Name:	DDB2 (DDB2 Products)
Background:	<p>This gene encodes a protein that is necessary for the repair of ultraviolet light-damaged DNA. This protein is the smaller subunit of a heterodimeric protein complex that participates in nucleotide excision repair, and this complex mediates the ubiquitylation of histones H3 and H4, which facilitates the cellular response to DNA damage. This subunit appears to be required for DNA binding. Mutations in this gene cause xeroderma pigmentosum complementation group E,</p>

Target Details

a recessive disease that is characterized by an increased sensitivity to UV light and a high predisposition for skin cancer development, in some cases accompanied by neurological abnormalities. Synonyms: Polyclonal DDB2 antibody, Anti-DDB2 antibody, damage-specific DNA binding protein 2, 48kDa antibody, DDBB antibody, FLJ34321 antibody, UV-DDB2 antibody.

Pathways: [DNA Damage Repair](#)

Application Details

Application Notes: WB: 0.2-1 µg/mL
Optimal conditions should be determined by the investigator.

Comment: DDB2 Blocking Peptide, catalog no. 33R-4210, is also available for use as a blocking control in assays to test for specificity of this DDB2 antibody

Restrictions: For Research Use only

Handling

Format: Lyophilized

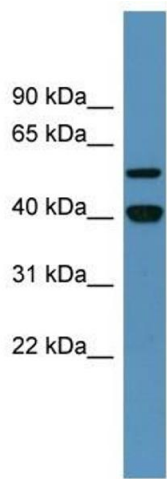
Concentration: Lot specific

Buffer: Lyophilized powder. Add 50 µL of distilled water. Final antibody concentration is 1 mg/mL in PBS buffer.

Handling Advice: Avoid repeated freeze/thaw cycles.

Storage: 4 °C/-20 °C

Storage Comment: Store at 4 °C, following reconstitution, aliquot and store at -20 °C.



Western Blotting

Image 1. Western Blot showing DDB2 antibody used at a concentration of 1-2 ug/ml to detect its target protein.