

Datasheet for ABIN926431

anti-Adipsin antibody (C-Term)[Go to Product page](#)**1** Image

Overview

Quantity:	100 µL
Target:	Adipsin (CFD)
Binding Specificity:	C-Term
Reactivity:	Human
Host:	Rabbit
Clonality:	Polyclonal
Conjugate:	This Adipsin antibody is un-conjugated
Application:	Western Blotting (WB)

Product Details

Immunogen:	CFD antibody was raised in rabbit using the C terminal of CFD as the immunogen
Purification:	Purified

Target Details

Target:	Adipsin (CFD)
Alternative Name:	CFD (CFD Products)
Background:	CFD is a member of the trypsin family of peptidases. The protein is a component of the alternative complement pathway best known for its role in humoral suppression of infectious agents. This protein is also a serine protease that is secreted by adipocytes into the bloodstream. Finally, this protein has a high level of expression in fat, suggesting a role for adipose tissue in immune system biology. Synonyms: Polyclonal CFD antibody, Anti-CFD

Target Details

	antibody, complement factor D, adipsin antibody, ADIPSIN antibody, ADN antibody, DF antibody, PFD antibody.
Pathways:	Complement System

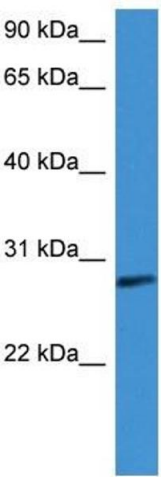
Application Details

Application Notes:	WB: 0.2-1 µg/mL Optimal conditions should be determined by the investigator.
Comment:	CFD Blocking Peptide, catalog no. 33R-3540, is also available for use as a blocking control in assays to test for specificity of this CFD antibody
Restrictions:	For Research Use only

Handling

Format:	Lyophilized
Concentration:	Lot specific
Buffer:	Lyophilized powder. Add 50 µL of distilled water. Final antibody concentration is 1 mg/mL in PBS buffer.
Handling Advice:	Avoid repeated freeze/thaw cycles.
Storage:	4 °C/-20 °C
Storage Comment:	Store at 4 °C, following reconstitution, aliquot and store at -20 °C.

Images



Western Blotting

Image 1. Western Blot showing CFD antibody used at a concentration of 1-2 ug/ml to detect its target protein.