

Datasheet for ABIN926434 **anti-ASNA1 antibody (C-Term)**



[Go to Product page](#)

1 Image

Overview

Quantity:	100 µL
Target:	ASNA1
Binding Specificity:	C-Term
Reactivity:	Human
Host:	Rabbit
Clonality:	Polyclonal
Conjugate:	This ASNA1 antibody is un-conjugated
Application:	Western Blotting (WB)

Product Details

Immunogen:	ASNA1 antibody was raised in rabbit using the C terminal of ASNA1 as the immunogen
Purification:	Purified

Target Details

Target:	ASNA1
Alternative Name:	ASNA1 (ASNA1 Products)
Background:	ASNA1 is the human homolog of the bacterial arsA gene. In E. coli, ArsA ATPase is the catalytic component of a multisubunit oxyanion pump that is responsible for resistance to arsenicals and antimonials. Synonyms: Polyclonal ASNA1 antibody, Anti-ASNA1 antibody, arsA arsenite transporter, ATP-binding, homolog 1, bacterial antibody, ARSA-I antibody, ARSA1 antibody, MGC3821 antibody.

Target Details

Pathways: [Positive Regulation of Peptide Hormone Secretion](#)

Application Details

Application Notes: Optimal conditions should be determined by the investigator.

Comment: ASNA1 Blocking Peptide, catalog no. 33R-4797, is also available for use as a blocking control in assays to test for specificity of this ASNA1 antibody

Restrictions: For Research Use only

Handling

Format: Lyophilized

Concentration: Lot specific

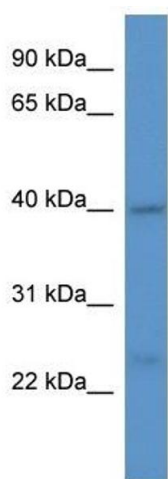
Buffer: Lyophilized powder. Add 50 μ L of distilled water. Final antibody concentration is 1 mg/mL in PBS buffer.

Handling Advice: Avoid repeated freeze/thaw cycles.

Storage: 4 $^{\circ}$ C/-20 $^{\circ}$ C

Storage Comment: Store at 4 $^{\circ}$ C, following reconstitution, aliquot and store at -20 $^{\circ}$ C.

Images



Western Blotting

Image 1. Western Blot showing ASNA1 antibody used at a concentration of 1.0 μ g/ml against COLO205 Cell Lysate