

Datasheet for ABIN926436
anti-OVGP1 antibody (C-Term)



[Go to Product page](#)

1 Image

Overview

Quantity:	100 µL
Target:	OVGP1
Binding Specificity:	C-Term
Reactivity:	Human
Host:	Rabbit
Clonality:	Polyclonal
Conjugate:	This OVGP1 antibody is un-conjugated
Application:	Western Blotting (WB)

Product Details

Immunogen:	OVGP1 antibody was raised in rabbit using the C terminal of OVGP1 as the immunogen
Purification:	Purified

Target Details

Target:	OVGP1
Alternative Name:	OVGP1 (OVGP1 Products)
Background:	OVGP1 is a large, carbohydrate-rich, epithelial glycoprotein with numerous O-glycosylation sites located within threonine, serine, and proline-rich tandem repeats. Regulation of expression may be estrogen-dependent. Gene expression and protein secretion occur during late follicular development through early cleavage-stage embryonic development. The protein is secreted from non-ciliated oviductal epithelial cells and associates with ovulated oocytes, blastomeres,

Target Details

and spermatozoan acrosomal regions. Synonyms: Polyclonal OVGP1 antibody, Anti-OVGP1 antibody, oviductal glycoprotein 1, 120kDa antibody, CHIT5 antibody, EGP antibody, MUC9 antibody, OGP antibody.

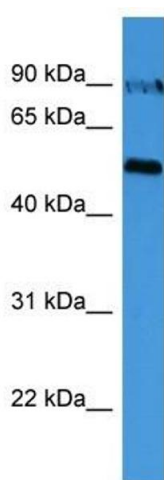
Application Details

Application Notes:	WB: 0.2-1 µg/mL Optimal conditions should be determined by the investigator.
Comment:	OVGP1 Blocking Peptide, catalog no. 33R-7639, is also available for use as a blocking control in assays to test for specificity of this OVGP1 antibody
Restrictions:	For Research Use only

Handling

Format:	Lyophilized
Concentration:	Lot specific
Buffer:	Lyophilized powder. Add 50 µL of distilled water. Final antibody concentration is 1 mg/mL in PBS buffer.
Handling Advice:	Avoid repeated freeze/thaw cycles.
Storage:	4 °C/-20 °C
Storage Comment:	Store at 4 °C, following reconstitution, aliquot and store at -20 °C.

Images



Western Blotting

Image 1. Western Blot showing OVGP1 antibody used at a concentration of 1-2 µg/ml to detect its target protein.