

Datasheet for ABIN926437
anti-AFAP1L2 antibody (N-Term)



[Go to Product page](#)

1 Image

Overview

| | |
|----------------------|--|
| Quantity: | 100 µL |
| Target: | AFAP1L2 |
| Binding Specificity: | N-Term |
| Reactivity: | Human |
| Host: | Rabbit |
| Clonality: | Polyclonal |
| Conjugate: | This AFAP1L2 antibody is un-conjugated |
| Application: | Western Blotting (WB) |

Product Details

| | |
|---------------|---|
| Immunogen: | AFAP1 L2 antibody was raised in rabbit using the N terminal of AFAP1 2 as the immunogen |
| Purification: | Purified |

Target Details

| | |
|-------------------|--|
| Target: | AFAP1L2 |
| Alternative Name: | AFAP1L2 (AFAP1L2 Products) |
| Background: | The function of this protein remains unknown. Synonyms: Polyclonal AFAP1L2 antibody, Anti-AFAP1L2 antibody, actin filament associated protein 1-like 2 antibody, FLJ14564 antibody, KIAA1914 antibody, XB130 antibody. |
| Pathways: | EGFR Signaling Pathway |

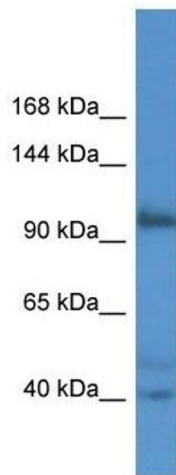
Application Details

| | |
|--------------------|--|
| Application Notes: | Optimal conditions should be determined by the investigator. |
| Comment: | AFAP1L2 Blocking Peptide, catalog no. 33R-7659, is also available for use as a blocking control in assays to test for specificity of this AFAP1L2 antibody |
| Restrictions: | For Research Use only |

Handling

| | |
|------------------|---|
| Format: | Lyophilized |
| Concentration: | Lot specific |
| Buffer: | Lyophilized powder. Add 50 μ L of distilled water. Final antibody concentration is 1 mg/mL in PBS buffer. |
| Handling Advice: | Avoid repeated freeze/thaw cycles. |
| Storage: | 4 °C/-20 °C |
| Storage Comment: | Store at 4 °C, following reconstitution, aliquot and store at -20 °C. |

Images



Western Blotting

Image 1. Western Blot showing AFAP1L2 antibody used at a concentration of 1.0 ug/ml against ACHN Cell Lysate