

Datasheet for ABIN926453
anti-LYZ antibody (N-Term)



[Go to Product page](#)

1 Image

Overview

Quantity:	100 µL
Target:	LYZ
Binding Specificity:	N-Term
Reactivity:	Human
Host:	Rabbit
Clonality:	Polyclonal
Conjugate:	This LYZ antibody is un-conjugated
Application:	Western Blotting (WB)

Product Details

Immunogen:	LYZ antibody was raised in rabbit using the N terminal of LYZ as the immunogen
Purification:	Purified

Target Details

Target:	LYZ
Alternative Name:	LYZ (LYZ Products)
Background:	LYZ is a human lysozyme, whose natural substrate is the bacterial cell wall peptidoglycan (cleaving the beta[1-4]glycosidic linkages between N-acetylmuramic acid and N-acetylglucosamine). Lysozyme is one of the anti-microbial agents found in human milk, and is also present in spleen, lung, kidney, white blood cells, plasma, saliva, and tears. Missense mutations in LYZ have been identified in heritable renal amyloidosis. Synonyms: Polyclonal LYZ

Target Details

antibody, Anti-LYZ antibody, lysozyme, renal amyloidosis antibody, LZM antibody, lysozyme antibody.

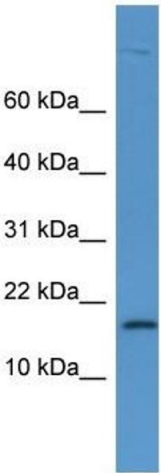
Application Details

Application Notes:	WB: 0.2-1 µg/mL Optimal conditions should be determined by the investigator.
Comment:	LYZ Blocking Peptide, catalog no. 33R-1730, is also available for use as a blocking control in assays to test for specificity of this LYZ antibody
Restrictions:	For Research Use only

Handling

Format:	Lyophilized
Concentration:	Lot specific
Buffer:	Lyophilized powder. Add 50 µL of distilled water. Final antibody concentration is 1 mg/mL in PBS buffer.
Handling Advice:	Avoid repeated freeze/thaw cycles.
Storage:	4 °C/-20 °C
Storage Comment:	Store at 4 °C, following reconstitution, aliquot and store at -20 °C.

Images



Western Blotting

Image 1. LYZ antibody (70R-10029) used at 0.2-1 ug/ml to detect target protein.