

Datasheet for ABIN926456
anti-MAP4 antibody (N-Term)



[Go to Product page](#)

1 Image

Overview

Quantity:	100 µL
Target:	MAP4
Binding Specificity:	N-Term
Reactivity:	Human
Host:	Rabbit
Clonality:	Polyclonal
Conjugate:	This MAP4 antibody is un-conjugated
Application:	Western Blotting (WB)

Product Details

Immunogen:	MAP4 antibody was raised in rabbit using the N terminal of MAP4 as the immunogen
Purification:	Purified

Target Details

Target:	MAP4
Alternative Name:	MAP4 (MAP4 Products)
Background:	MAP4 is a major non-neuronal microtubule-associated protein. This protein contains a domain similar to the microtubule-binding domains of neuronal microtubule-associated protein (MAP2) and microtubule-associated protein tau (MAPT/TAU). This protein promotes microtubule assembly, and has been shown to counteract destabilization of interphase microtubule catastrophe promotion. Cyclin B was found to interact with this protein, which targets cell

Target Details

division cycle 2 (CDC2) kinase to microtubules. The phosphorylation of this protein affects microtubule properties and cell cycle progression. Synonyms: Polyclonal MAP4 antibody, Anti-MAP4 antibody, microtubule-associated protein 4 antibody, DKFZp779A1753 antibody, MGC8617 antibody.

Pathways: [p53 Signaling](#), [Microtubule Dynamics](#)

Application Details

Application Notes: WB: 0.2-1 µg/mL
Optimal conditions should be determined by the investigator.

Comment: MAP4 Blocking Peptide, catalog no. 33R-5085, is also available for use as a blocking control in assays to test for specificity of this MAP4 antibody

Restrictions: For Research Use only

Handling

Format: Lyophilized

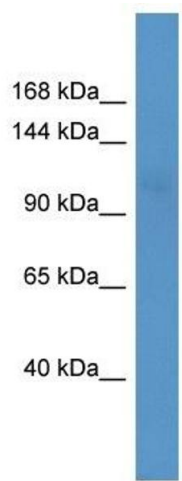
Concentration: Lot specific

Buffer: Lyophilized powder. Add 50 µL of distilled water. Final antibody concentration is 1 mg/mL in PBS buffer.

Handling Advice: Avoid repeated freeze/thaw cycles.

Storage: 4 °C/-20 °C

Storage Comment: Store at 4 °C, following reconstitution, aliquot and store at -20 °C.



Western Blotting

Image 1. MAP4 antibody (70R-10032) used at 0.2-1 ug/ml to detect target protein.