

Datasheet for ABIN926469  
**anti-Myopalladin antibody (C-Term)**



[Go to Product page](#)

1 Image

## Overview

Quantity:	100 µL
Target:	Myopalladin (MYPN)
Binding Specificity:	C-Term
Reactivity:	Human
Host:	Rabbit
Clonality:	Polyclonal
Conjugate:	This Myopalladin antibody is un-conjugated
Application:	Western Blotting (WB)

## Product Details

Immunogen:	MYPN antibody was raised in rabbit using the C terminal of MYPN as the immunogen
Purification:	Purified

## Target Details

Target:	Myopalladin (MYPN)
Alternative Name:	MYPN ( <a href="#">MYPN Products</a> )
Background:	MYPN is a component of the sarcomere that tethers nebulin in skeletal muscle and nebulin in cardiac muscle to alpha-actinin at the Z lines. Synonyms: Polyclonal MYPN antibody, Anti-MYPN antibody, myopalladin antibody, MYOP antibody.

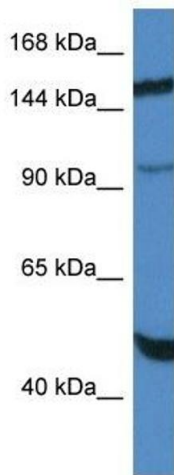
## Application Details

Application Notes:	Optimal conditions should be determined by the investigator.
Comment:	MYPN Blocking Peptide, catalog no. 33R-7419, is also available for use as a blocking control in assays to test for specificity of this MYPN antibody
Restrictions:	For Research Use only

## Handling

Format:	Lyophilized
Concentration:	Lot specific
Buffer:	Lyophilized powder. Add 50 $\mu$ L of distilled water. Final antibody concentration is 1 mg/mL in PBS buffer.
Handling Advice:	Avoid repeated freeze/thaw cycles.
Storage:	4 °C/-20 °C
Storage Comment:	Store at 4 °C, following reconstitution, aliquot and store at -20 °C.

## Images



### Western Blotting

**Image 1.** Western Blot showing MYPN antibody used at a concentration of 1.0  $\mu$ g/ml against HepG2 Cell Lysate