

Datasheet for ABIN926476  
**anti-SPIRE2 antibody (N-Term)**



[Go to Product page](#)

1 Image

## Overview

|                      |                                       |
|----------------------|---------------------------------------|
| Quantity:            | 100 µL                                |
| Target:              | SPIRE2                                |
| Binding Specificity: | N-Term                                |
| Reactivity:          | Human                                 |
| Host:                | Rabbit                                |
| Clonality:           | Polyclonal                            |
| Conjugate:           | This SPIRE2 antibody is un-conjugated |
| Application:         | Western Blotting (WB)                 |

## Product Details

|               |  |
|---------------|--|
| Immunogen:    | SPIRE2 antibody was raised in rabbit using the N terminal of SPIRE2 as the immunogen |
| Purification: | Purified   |

## Target Details

|                   |   |
|-------------------|---|
| Target:           | SPIRE2  |
| Alternative Name: | SPIRE2 ( <a href="#">SPIRE2 Products</a> )  |
| Background:       | SPIRE2 acts as a actin nucleation factor, remains associated with the slow-growing pointed end of the new filament. It is involved in vesicle transport processes providing a novel link between actin organization and intracellular transport. Synonyms: Polyclonal SPIRE2 antibody, Anti-SPIRE2 antibody, spire homolog 2, Drosophila antibody, MGC117166 antibody, Spir-2 antibody. |

## Application Details

---

|                    |  |
|--------------------|--|
| Application Notes: | WB: 0.2-1 µg/mL<br>Optimal conditions should be determined by the investigator.  |
| Comment:           | SPIRE2 Blocking Peptide, catalog no. 33R-2279, is also available for use as a blocking control in assays to test for specificity of this SPIRE2 antibody |
| Restrictions:      | For Research Use only  |

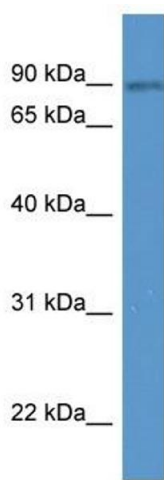
## Handling

---

|                  |  |
|------------------|--|
| Format:          | Lyophilized  |
| Concentration:   | Lot specific   |
| Buffer:          | Lyophilized powder. Add 50 µL of distilled water. Final antibody concentration is 1 mg/mL in PBS buffer. |
| Handling Advice: | Avoid repeated freeze/thaw cycles.   |
| Storage:         | 4 °C/-20 °C  |
| Storage Comment: | Store at 4 °C, following reconstitution, aliquot and store at -20 °C.                                    |

## Images

---



### Western Blotting

**Image 1.** SPIRE2 antibody (70R-10052) used at 0.2-1 µg/ml to detect target protein.