

Datasheet for ABIN926477
anti-SPRED2 antibody (C-Term)



[Go to Product page](#)

1 Image

Overview

Quantity:	100 µL
Target:	SPRED2
Binding Specificity:	C-Term
Reactivity:	Human
Host:	Rabbit
Clonality:	Polyclonal
Conjugate:	This SPRED2 antibody is un-conjugated
Application:	Western Blotting (WB)

Product Details

Immunogen:	SPRED2 antibody was raised in rabbit using the C terminal of SPRED2 as the immunogen
Purification:	Purified

Target Details

Target:	SPRED2
Alternative Name:	SPRED2 (SPRED2 Products)
Background:	SPRED2 is a member of the Sprouty /SPRED family of proteins that regulate growth factor-induced activation of the MAP kinase cascade. Synonyms: Polyclonal SPRED2 antibody, Anti-SPRED2 antibody, sprouty-related, EVH1 domain containing 2 antibody, FLJ21897 antibody, FLJ31917 antibody, MGC163164 antibody, Spred-2 antibody.

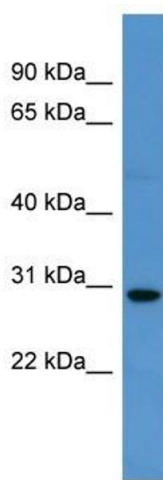
Application Details

Application Notes:	WB: 0.2-1 µg/mL Optimal conditions should be determined by the investigator.
Comment:	SPRED2 Blocking Peptide, catalog no. 33R-6713, is also available for use as a blocking control in assays to test for specificity of this SPRED2 antibody
Restrictions:	For Research Use only

Handling

Format:	Lyophilized
Concentration:	Lot specific
Buffer:	Lyophilized powder. Add 50 µL of distilled water. Final antibody concentration is 1 mg/mL in PBS buffer.
Handling Advice:	Avoid repeated freeze/thaw cycles.
Storage:	4 °C/-20 °C
Storage Comment:	Store at 4 °C, following reconstitution, aliquot and store at -20 °C.

Images



Western Blotting

Image 1. Western Blot showing SPRED2 antibody used at a concentration of 1-2 µg/ml to detect its target protein.