

Datasheet for ABIN926499

anti-FLYWCH1 antibody (C-Term)**1** Image[Go to Product page](#)

Overview

Quantity:	100 µL
Target:	FLYWCH1
Binding Specificity:	C-Term
Reactivity:	Human
Host:	Rabbit
Clonality:	Polyclonal
Conjugate:	This FLYWCH1 antibody is un-conjugated
Application:	Western Blotting (WB)

Product Details

Immunogen:	FLYWCH1 antibody was raised in rabbit using the C terminal of FLYWCH1 as the immunogen
Purification:	Purified

Target Details

Target:	FLYWCH1
Alternative Name:	FLYWCH1 (FLYWCH1 Products)
Background:	The function of this protein remains unknown. Synonyms: Polyclonal FLYWCH1 antibody, Anti-FLYWCH1 antibody, FLYWCH-type zinc finger 1 antibody.

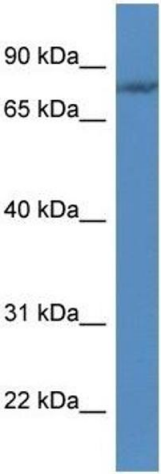
Application Details

Application Notes:	Optimal conditions should be determined by the investigator.
Comment:	FLYWCH1 Blocking Peptide, catalog no. 33R-1485, is also available for use as a blocking control in assays to test for specificity of this FLYWCH1 antibody
Restrictions:	For Research Use only

Handling

Format:	Lyophilized
Concentration:	Lot specific
Buffer:	Lyophilized powder. Add 50 µL of distilled water. Final antibody concentration is 1 mg/mL in PBS buffer.
Handling Advice:	Avoid repeated freeze/thaw cycles.
Storage:	4 °C/-20 °C
Storage Comment:	Store at 4 °C, following reconstitution, aliquot and store at -20 °C.

Images



Western Blotting

Image 1. Western Blot showing FLYWCH1 antibody used at a concentration of 1.0 ug/ml against HepG2 Cell Lysate