

Datasheet for ABIN926518
anti-SLAP2 antibody (N-Term)



[Go to Product page](#)

1 Image

Overview

Quantity:	100 µL
Target:	SLAP2 (SLA2)
Binding Specificity:	N-Term
Reactivity:	Human
Host:	Rabbit
Clonality:	Polyclonal
Conjugate:	This SLAP2 antibody is un-conjugated
Application:	Western Blotting (WB)

Product Details

Immunogen:	SLA2 antibody was raised in rabbit using the N terminal of SLA2 as the immunogen
Purification:	Purified

Target Details

Target:	SLAP2 (SLA2)
Alternative Name:	SLA2 (SLA2 Products)
Background:	This gene encodes a member of the SLAP family of adapter proteins. The encoded protein may play an important receptor-proximal role in downregulating T and B cell-mediated responses and inhibits antigen receptor-induced calcium mobilization. This protein interacts with Cas-Br-M (murine) ecotropic retroviral transforming sequence c. Synonyms: Polyclonal SLA2 antibody, Anti-SLA2 antibody, Src-like-adaptor 2 antibody, C20orf156 antibody, FLJ21992 antibody,

Target Details

MGC49845 antibody, SLAP-2 antibody, SLAP2 antibody.

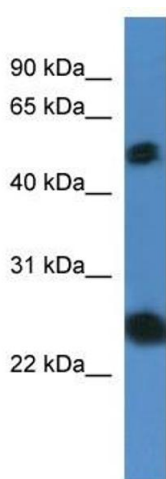
Application Details

Application Notes:	WB: 0.2-1 µg/mL Optimal conditions should be determined by the investigator.
Comment:	SLA2 Blocking Peptide, catalog no. 33R-3216, is also available for use as a blocking control in assays to test for specificity of this SLA2 antibody
Restrictions:	For Research Use only

Handling

Format:	Lyophilized
Concentration:	Lot specific
Buffer:	Lyophilized powder. Add 50 µL of distilled water. Final antibody concentration is 1 mg/mL in PBS buffer.
Handling Advice:	Avoid repeated freeze/thaw cycles.
Storage:	4 °C/-20 °C
Storage Comment:	Store at 4 °C, following reconstitution, aliquot and store at -20 °C.

Images



Western Blotting

Image 1. Western Blot showing SLA2 antibody used at a concentration of 1-2 µg/ml to detect its target protein.