

## Datasheet for ABIN926521 **anti-TCHP antibody (C-Term)**



[Go to Product page](#)

### 1 Image

#### Overview

Quantity:	100 µL
Target:	TCHP
Binding Specificity:	C-Term
Reactivity:	Human
Host:	Rabbit
Clonality:	Polyclonal
Conjugate:	This TCHP antibody is un-conjugated
Application:	Western Blotting (WB)

#### Product Details

Immunogen:	TCHP antibody was raised in rabbit using the C terminal of TCHP as the immunogen
Purification:	Purified

#### Target Details

Target:	TCHP
Alternative Name:	TCHP ( <a href="#">TCHP Products</a> )
Background:	TCHP is a tumor suppressor which has the ability to inhibit cell growth and be pro-apoptotic during cell stress. It inhibits cell growth in bladder and prostate cancer cells by a down-regulation of HSPB1 by inhibiting its phosphorylation. It may act as a 'capping' or 'branching' protein for keratin filaments in the cell periphery. And it also may regulate K8/K18 filament and desmosome organization mainly at the apical or peripheral regions of simple epithelial cells.

## Target Details

Synonyms: Polyclonal TCHP antibody, Anti-TCHP antibody, trichoplein, keratin filament binding antibody, MGC10854 antibody.

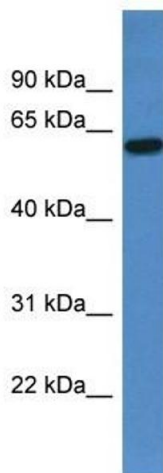
## Application Details

Application Notes:	WB: 0.2-1 µg/mL Optimal conditions should be determined by the investigator.
Comment:	TCHP Blocking Peptide, catalog no. 33R-4111, is also available for use as a blocking control in assays to test for specificity of this TCHP antibody
Restrictions:	For Research Use only

## Handling

Format:	Lyophilized
Concentration:	Lot specific
Buffer:	Lyophilized powder. Add 50 µL of distilled water. Final antibody concentration is 1 mg/mL in PBS buffer.
Handling Advice:	Avoid repeated freeze/thaw cycles.
Storage:	4 °C/-20 °C
Storage Comment:	Store at 4 °C, following reconstitution, aliquot and store at -20 °C.

## Images



### Western Blotting

**Image 1.** Western Blot showing TCHP antibody used at a concentration of 1-2 µg/ml to detect its target protein.