

Datasheet for ABIN926522
anti-TMEM222 antibody (C-Term)



[Go to Product page](#)

1 Image

Overview

Quantity:	100 µL
Target:	TMEM222
Binding Specificity:	C-Term
Reactivity:	Human
Host:	Rabbit
Clonality:	Polyclonal
Conjugate:	This TMEM222 antibody is un-conjugated
Application:	Western Blotting (WB)

Product Details

Immunogen:	TMEM222 antibody was raised in rabbit using the C terminal of TMEM222 as the immunogen
Purification:	Purified

Target Details

Target:	TMEM222
Alternative Name:	TMEM222 (TMEM222 Products)
Background:	The function of this protein remains unknown. Synonyms: Polyclonal TMEM222 antibody, Anti-TMEM222 antibody, transmembrane protein 222 antibody, C1orf160 antibody, DKFZp564D0478 antibody, MGC111002 antibody.

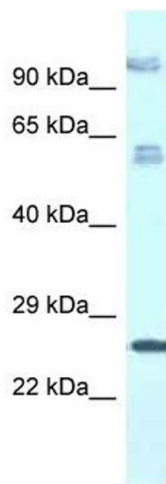
Application Details

Application Notes:	Optimal conditions should be determined by the investigator.
Comment:	TMEM222 Blocking Peptide, catalog no. 33R-9962, is also available for use as a blocking control in assays to test for specificity of this TMEM222 antibody
Restrictions:	For Research Use only

Handling

Format:	Lyophilized
Concentration:	Lot specific
Buffer:	Lyophilized powder. Add 50 μ L of distilled water. Final antibody concentration is 1 mg/mL in PBS buffer.
Handling Advice:	Avoid repeated freeze/thaw cycles.
Storage:	4 °C/-20 °C
Storage Comment:	Store at 4 °C, following reconstitution, aliquot and store at -20 °C.

Images



Western Blotting

Image 1. Western Blot showing TMEM222 antibody used at a concentration of 1.0 ug/ml against Fetal Lung Lysate