

Datasheet for ABIN926529  
**anti-PRAC antibody (N-Term)**



[Go to Product page](#)

1 Image

## Overview

Quantity:	100 µL
Target:	PRAC
Binding Specificity:	N-Term
Reactivity:	Human
Host:	Rabbit
Clonality:	Polyclonal
Conjugate:	This PRAC antibody is un-conjugated
Application:	Western Blotting (WB)

## Product Details

Immunogen:	PRAC antibody was raised in rabbit using the N terminal of PRAC as the immunogen
Purification:	Purified

## Target Details

Target:	PRAC
Alternative Name:	PRAC ( <a href="#">PRAC Products</a> )
Background:	<p>This gene is reported to be specifically expressed in prostate, rectum and distal colon. Sequence analysis suggests that it may play a regulatory role in the nucleus. Synonyms: Polyclonal PRAC antibody, Anti-PRAC antibody, prostate cancer susceptibility candidate antibody, C17orf92 antibody, MGC32520 antibody.</p>

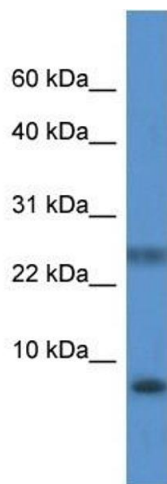
## Application Details

Application Notes:	Optimal conditions should be determined by the investigator.
Comment:	PRAC Blocking Peptide, catalog no. 33R-2130, is also available for use as a blocking control in assays to test for specificity of this PRAC antibody
Restrictions:	For Research Use only

## Handling

Format:	Lyophilized
Concentration:	Lot specific
Buffer:	Lyophilized powder. Add 50 $\mu$ L of distilled water. Final antibody concentration is 1 mg/mL in PBS buffer.
Handling Advice:	Avoid repeated freeze/thaw cycles.
Storage:	4 °C/-20 °C
Storage Comment:	Store at 4 °C, following reconstitution, aliquot and store at -20 °C.

## Images



### Western Blotting

**Image 1.** Western Blot showing PRAC antibody used at a concentration of 1.0  $\mu$ g/ml against Fetal Liver Lysate