

Datasheet for ABIN926532  
**anti-IMMP2L antibody (N-Term)**



[Go to Product page](#)

1 Image

## Overview

Quantity:	100 µL
Target:	IMMP2L
Binding Specificity:	N-Term
Reactivity:	Human
Host:	Rabbit
Clonality:	Polyclonal
Conjugate:	This IMMP2L antibody is un-conjugated
Application:	Western Blotting (WB)

## Product Details

Immunogen:	IMMP2 L antibody was raised in rabbit using the N terminal of IMMP2 as the immunogen
Purification:	Purified

## Target Details

Target:	IMMP2L
Alternative Name:	IMMP2L ( <a href="#">IMMP2L Products</a> )
Background:	The mitochondrial inner membrane peptidase (IMP) complex generates mature, active proteins in the mitochondrial intermembrane space by proteolytically removing the mitochondrial targeting presequence of nuclear-encoded proteins. IMP1 and IMP2 are the catalytic subunits of the IMP complex. Synonyms: Polyclonal IMMP2L antibody, Anti-IMMP2L antibody, IMP2 inner mitochondrial membrane peptidase-like, S. cerevisiae antibody, IMP2 antibody, IMP2-LIKE

## Target Details

---

antibody.

## Application Details

---

Application Notes:	WB: 0.2-1 µg/mL Optimal conditions should be determined by the investigator.
Comment:	IMMP2L Blocking Peptide, catalog no. 33R-5235, is also available for use as a blocking control in assays to test for specificity of this IMMP2L antibody
Restrictions:	For Research Use only

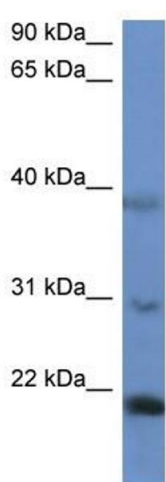
## Handling

---

Format:	Lyophilized
Concentration:	Lot specific
Buffer:	Lyophilized powder. Add 50 µL of distilled water. Final antibody concentration is 1 mg/mL in PBS buffer.
Handling Advice:	Avoid repeated freeze/thaw cycles.
Storage:	4 °C/-20 °C
Storage Comment:	Store at 4 °C, following reconstitution, aliquot and store at -20 °C.

## Images

---



### Western Blotting

**Image 1.** Western Blot showing IMMP2L antibody used at a concentration of 1-2 ug/ml to detect its target protein.