

Datasheet for ABIN926536 **anti-ROPN1L antibody (N-Term)**



[Go to Product page](#)

1 Image

Overview

Quantity:	100 µL
Target:	ROPN1L
Binding Specificity:	N-Term
Reactivity:	Human
Host:	Rabbit
Clonality:	Polyclonal
Conjugate:	This ROPN1L antibody is un-conjugated
Application:	Western Blotting (WB)

Product Details

Immunogen:	ROPN1 L antibody was raised in rabbit using the N terminal of ROPN1 as the immunogen
Purification:	Purified

Target Details

Target:	ROPN1L
Alternative Name:	ROPN1L (ROPN1L Products)
Background:	This gene encodes a member of the ropporin family. The encoded protein is a sperm protein. It interacts with A-kinase anchoring protein, AKAP3, through the amphipathic helix region of AKAP3. Type II regulatory subunit of cAMP-dependent protein kinase (PKARII) also binds to this helix domain of AKAP3, which allows PKARII to be targeted to specific subcellular compartments. It is suggested that sperm contains several proteins that bind to AKAPs in a

Target Details

manner similar to PKARII, and this encoded protein may be one of them. Synonyms: Polyclonal ROPN1L antibody, Anti-ROPN1L antibody, ropporin 1-like antibody, ASP antibody, FLJ23003 antibody, FLJ25776 antibody, RSPH11 antibody.

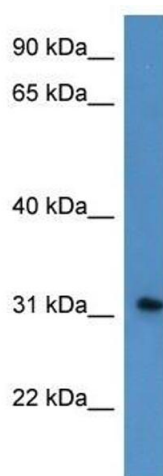
Application Details

Application Notes:	WB: 0.2-1 µg/mL Optimal conditions should be determined by the investigator.
Comment:	ROPN1L Blocking Peptide, catalog no. 33R-3674, is also available for use as a blocking control in assays to test for specificity of this ROPN1L antibody
Restrictions:	For Research Use only

Handling

Format:	Lyophilized
Concentration:	Lot specific
Buffer:	Lyophilized powder. Add 50 µL of distilled water. Final antibody concentration is 1 mg/mL in PBS buffer.
Handling Advice:	Avoid repeated freeze/thaw cycles.
Storage:	4 °C/-20 °C
Storage Comment:	Store at 4 °C, following reconstitution, aliquot and store at -20 °C.

Images



Western Blotting

Image 1. Western Blot showing ROPN1L antibody used at a concentration of 1-2 µg/ml to detect its target protein.