

Datasheet for ABIN926543
anti-TM2D2 antibody (Middle Region)



[Go to Product page](#)

1 Image

Overview

Quantity:	100 µL
Target:	TM2D2
Binding Specificity:	Middle Region
Reactivity:	Human
Host:	Rabbit
Clonality:	Polyclonal
Conjugate:	This TM2D2 antibody is un-conjugated
Application:	Western Blotting (WB)

Product Details

Immunogen:	TM2 D2 antibody was raised in rabbit using the middle region of TM2 2 as the immunogen
Purification:	Purified

Target Details

Target:	TM2D2
Alternative Name:	TM2D2 (TM2D2 Products)
Background:	The protein encoded by this gene contains a structural module related to that of the seven transmembrane domain G protein-coupled receptor superfamily. This protein has sequence and structural similarities to the beta-amyloid binding protein (BBP), but, unlike BBP, it does not regulate a response to beta-amyloid peptide. This protein may have regulatory roles in cell death or proliferation signal cascades. Synonyms: Polyclonal TM2D2 antibody, Anti-TM2D2

Target Details

antibody, TM2 domain containing 2 antibody, BLP1 antibody, MGC125813 antibody, MGC125814 antibody.

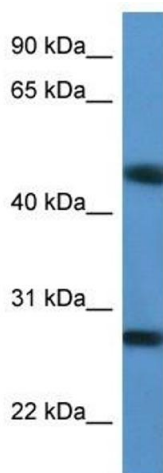
Application Details

Application Notes:	WB: 0.2-1 µg/mL Optimal conditions should be determined by the investigator.
Comment:	TM2D2 Blocking Peptide, catalog no. 33R-7531, is also available for use as a blocking control in assays to test for specificity of this TM2D2 antibody
Restrictions:	For Research Use only

Handling

Format:	Lyophilized
Concentration:	Lot specific
Buffer:	Lyophilized powder. Add 50 µL of distilled water. Final antibody concentration is 1 mg/mL in PBS buffer.
Handling Advice:	Avoid repeated freeze/thaw cycles.
Storage:	4 °C/-20 °C
Storage Comment:	Store at 4 °C, following reconstitution, aliquot and store at -20 °C.

Images



Western Blotting

Image 1. Western Blot showing TM2D2 antibody used at a concentration of 1-2 µg/ml to detect its target protein.