

Datasheet for ABIN926548  
**anti-SPSB2 antibody (C-Term)**



[Go to Product page](#)

1 Image

## Overview

Quantity:	100 µL
Target:	SPSB2
Binding Specificity:	C-Term
Reactivity:	Human
Host:	Rabbit
Clonality:	Polyclonal
Conjugate:	This SPSB2 antibody is un-conjugated
Application:	Western Blotting (WB)

## Product Details

Immunogen:	SPSB2 antibody was raised in rabbit using the C terminal of SPSB2 as the immunogen
Purification:	Purified

## Target Details

Target:	SPSB2
Alternative Name:	SPSB2 ( <a href="#">SPSB2 Products</a> )
Background:	This gene encodes a suppressor of cytokine signaling (SOCS) family member, and it belongs to the subfamily of proteins containing a central SPRY (repeats in splA and RyR) domain and a C-terminal SOCS box. This gene is present in a gene-rich cluster on chromosome 12p13 in the vicinity of the CD4 antigen and triosephosphate isomerase genes. Synonyms: Polyclonal SPSB2 antibody, Anti-SPSB2 antibody, splA/ryanodine receptor domain and SOCS

## Target Details

---

box containing 2 antibody, FLJ17395 antibody, GRCC9 antibody, MGC2519 antibody, SSB2 antibody.

## Application Details

---

Application Notes:	Optimal conditions should be determined by the investigator.
Comment:	SPSB2 Blocking Peptide, catalog no. 33R-3978, is also available for use as a blocking control in assays to test for specificity of this SPSB2 antibody
Restrictions:	For Research Use only

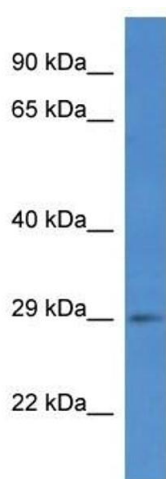
## Handling

---

Format:	Lyophilized
Concentration:	Lot specific
Buffer:	Lyophilized powder. Add 50 $\mu$ L of distilled water. Final antibody concentration is 1 mg/mL in PBS buffer.
Handling Advice:	Avoid repeated freeze/thaw cycles.
Storage:	4 °C/-20 °C
Storage Comment:	Store at 4 °C, following reconstitution, aliquot and store at -20 °C.

## Images

---



### Western Blotting

**Image 1.** Western Blot showing SPSB2 antibody used at a concentration of 1  $\mu$ g/ml against COLO205 Cell Lysate