

Datasheet for ABIN926565  
**anti-KLHL22 antibody (N-Term)**



[Go to Product page](#)

1 Image

## Overview

Quantity:	100 µL
Target:	KLHL22
Binding Specificity:	N-Term
Reactivity:	Human
Host:	Rabbit
Clonality:	Polyclonal
Conjugate:	This KLHL22 antibody is un-conjugated
Application:	Western Blotting (WB)

## Product Details

Immunogen:	KLHL22 antibody was raised in rabbit using the N terminal of KLHL22 as the immunogen
Purification:	Purified

## Target Details

Target:	KLHL22
Alternative Name:	KLHL22 ( <a href="#">KLHL22 Products</a> )
Background:	KLHL22 is a substrate-specific adapter of a BCR (BTB-CUL3-RBX1) E3 ubiquitin ligase complex required for cell division. BCR E3 ubiquitin ligase complexes mediate the ubiquitination of target proteins. Synonyms: Polyclonal KLHL22 antibody, Anti-KLHL22 antibody, kelch-like 22, Drosophila antibody, KELCHL antibody.

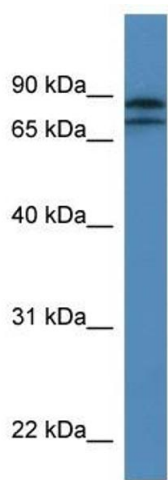
## Application Details

Application Notes:	WB: 0.2-1 µg/mL Optimal conditions should be determined by the investigator.
Comment:	KLHL22 Blocking Peptide, catalog no. 33R-4051, is also available for use as a blocking control in assays to test for specificity of this KLHL22 antibody
Restrictions:	For Research Use only

## Handling

Format:	Lyophilized
Concentration:	Lot specific
Buffer:	Lyophilized powder. Add 50 µL of distilled water. Final antibody concentration is 1 mg/mL in PBS buffer.
Handling Advice:	Avoid repeated freeze/thaw cycles.
Storage:	4 °C/-20 °C
Storage Comment:	Store at 4 °C, following reconstitution, aliquot and store at -20 °C.

## Images



### Western Blotting

**Image 1.** Western Blot showing KLHL22 antibody used at a concentration of 1-2 µg/ml to detect its target protein.