

Datasheet for ABIN926568
anti-ATAD1 antibody (C-Term)



[Go to Product page](#)

1 Image

Overview

Quantity:	100 µL
Target:	ATAD1
Binding Specificity:	C-Term
Reactivity:	Human
Host:	Rabbit
Clonality:	Polyclonal
Conjugate:	This ATAD1 antibody is un-conjugated
Application:	Western Blotting (WB)

Product Details

Immunogen:	ATAD1 antibody was raised in rabbit using the C terminal of ATAD1 as the immunogen
Purification:	Purified

Target Details

Target:	ATAD1
Alternative Name:	ATAD1 (ATAD1 Products)
Background:	The function of this protein remains unknown. Synonyms: Polyclonal ATAD1 antibody, Anti-ATAD1 antibody, ATPase family, AAA domain containing 1 antibody, AFDC1 antibody, FLJ14600 antibody, FNP001 antibody.
Pathways:	Synaptic Membrane

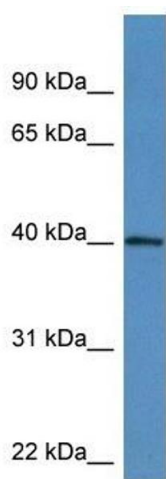
Application Details

Application Notes:	WB: 0.2-1 µg/mL Optimal conditions should be determined by the investigator.
Comment:	ATAD1 Blocking Peptide, catalog no. 33R-4612, is also available for use as a blocking control in assays to test for specificity of this ATAD1 antibody
Restrictions:	For Research Use only

Handling

Format:	Lyophilized
Concentration:	Lot specific
Buffer:	Lyophilized powder. Add 50 µL of distilled water. Final antibody concentration is 1 mg/mL in PBS buffer.
Handling Advice:	Avoid repeated freeze/thaw cycles.
Storage:	4 °C/-20 °C
Storage Comment:	Store at 4 °C, following reconstitution, aliquot and store at -20 °C.

Images



Western Blotting

Image 1. Western Blot showing ATAD1 antibody used at a concentration of 1-2 µg/ml to detect its target protein.