

Datasheet for ABIN926572  
**anti-RAB2B antibody (C-Term)**



[Go to Product page](#)

1 Image

## Overview

Quantity:	100 µL
Target:	RAB2B
Binding Specificity:	C-Term
Reactivity:	Human
Host:	Rabbit
Clonality:	Polyclonal
Conjugate:	This RAB2B antibody is un-conjugated
Application:	Western Blotting (WB)

## Product Details

Immunogen:	RAB2 B antibody was raised in rabbit using the C terminal of RAB2 as the immunogen
Purification:	Purified

## Target Details

Target:	RAB2B
Alternative Name:	RAB2B ( <a href="#">RAB2B Products</a> )
Background:	Members of the Rab protein family are nontransforming monomeric GTP-binding proteins of the Ras superfamily that contain 4 highly conserved regions involved in GTP binding and hydrolysis. Rab proteins are prenylated, membrane-bound proteins involved in vesicular fusion and trafficking. Synonyms: Polyclonal RAB2B antibody, Anti-RAB2B antibody, RAB2B, member RAS oncogene family antibody, FLJ14824 antibody.

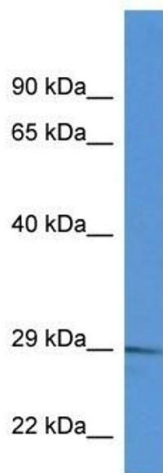
## Application Details

Application Notes:	Optimal conditions should be determined by the investigator.
Comment:	RAB2B Blocking Peptide, catalog no. 33R-6895, is also available for use as a blocking control in assays to test for specificity of this RAB2B antibody
Restrictions:	For Research Use only

## Handling

Format:	Lyophilized
Concentration:	Lot specific
Buffer:	Lyophilized powder. Add 50 $\mu$ L of distilled water. Final antibody concentration is 1 mg/mL in PBS buffer.
Handling Advice:	Avoid repeated freeze/thaw cycles.
Storage:	4 °C/-20 °C
Storage Comment:	Store at 4 °C, following reconstitution, aliquot and store at -20 °C.

## Images



### Western Blotting

**Image 1.** Western Blot showing RAB2B antibody used at a concentration of 1  $\mu$ g/ml against U937 Cell Lysate