

Datasheet for ABIN926601
anti-CYP2W1 antibody (C-Term)



[Go to Product page](#)

1 Image

Overview

Quantity:	100 µL
Target:	CYP2W1
Binding Specificity:	C-Term
Reactivity:	Human
Host:	Rabbit
Clonality:	Polyclonal
Conjugate:	This CYP2W1 antibody is un-conjugated
Application:	Western Blotting (WB)

Product Details

Immunogen:	CYP2 W1 antibody was raised in rabbit using the C terminal of CYP2 1 as the immunogen
Purification:	Purified

Target Details

Target:	CYP2W1
Alternative Name:	CYP2W1 (CYP2W1 Products)
Background:	This gene encodes a member of the cytochrome P450 superfamily of enzymes. The cytochrome P450 proteins are monooxygenases which catalyze many reactions involved in drug metabolism and synthesis of cholesterol, steroids and other lipids. Synonyms: Polyclonal CYP2W1 antibody, Anti-CYP2W1 antibody, cytochrome P450, family 2, subfamily W, polypeptide 1 antibody, MGC34287 antibody.

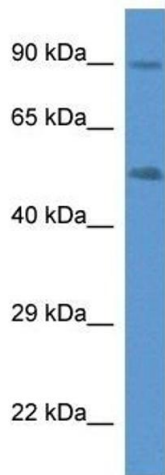
Application Details

Application Notes:	Optimal conditions should be determined by the investigator.
Comment:	CYP2W1 Blocking Peptide, catalog no. 33R-7404, is also available for use as a blocking control in assays to test for specificity of this CYP2W1 antibody
Restrictions:	For Research Use only

Handling

Format:	Lyophilized
Concentration:	Lot specific
Buffer:	Lyophilized powder. Add 50 μ L of distilled water. Final antibody concentration is 1 mg/mL in PBS buffer.
Handling Advice:	Avoid repeated freeze/thaw cycles.
Storage:	4 °C/-20 °C
Storage Comment:	Store at 4 °C, following reconstitution, aliquot and store at -20 °C.

Images



Western Blotting

Image 1. Western Blot showing CYP2W1 antibody used at a concentration of 1 μ g/ml against Fetal Lung Lysate