

Datasheet for ABIN926620
anti-PIGC antibody (C-Term)



[Go to Product page](#)

1 Image

Overview

Quantity:	100 µL
Target:	PIGC
Binding Specificity:	C-Term
Reactivity:	Human
Host:	Rabbit
Clonality:	Polyclonal
Conjugate:	This PIGC antibody is un-conjugated
Application:	Western Blotting (WB)

Product Details

Immunogen:	PIGC antibody was raised in rabbit using the C terminal of PIGC as the immunogen
Purification:	Purified

Target Details

Target:	PIGC
Alternative Name:	PIGC (PIGC Products)
Background:	This gene encodes an endoplasmic reticulum associated protein that is involved in glycosylphosphatidylinositol (GPI) lipid anchor biosynthesis. The GPI lipid anchor is a glycolipid found on many blood cells and serves to anchor proteins to the cell surface. The encoded protein is one subunit of the GPI N-acetylglucosaminyl (GlcNAc) transferase that transfers GlcNAc to phosphatidylinositol (PI) on the cytoplasmic side of the endoplasmic reticulum.

Target Details

Synonyms: Polyclonal PIGC antibody, Anti-PIGC antibody, phosphatidylinositol glycan anchor biosynthesis, class C antibody, GPI2 antibody, MGC2049 antibody.

Pathways: [Inositol Metabolic Process](#)

Application Details

Application Notes: Optimal conditions should be determined by the investigator.

Comment: PIGC Blocking Peptide, catalog no. 33R-1593, is also available for use as a blocking control in assays to test for specificity of this PIGC antibody

Restrictions: For Research Use only

Handling

Format: Lyophilized

Concentration: Lot specific

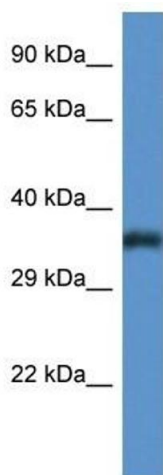
Buffer: Lyophilized powder. Add 50 μ L of distilled water. Final antibody concentration is 1 mg/mL in PBS buffer.

Handling Advice: Avoid repeated freeze/thaw cycles.

Storage: 4 °C/-20 °C

Storage Comment: Store at 4 °C, following reconstitution, aliquot and store at -20 °C.

Images



Western Blotting

Image 1. Western Blot showing PIGC antibody used at a concentration of 1 μ g/ml against Fetal Lung Lysate