

## Datasheet for ABIN926625 **anti-DGCR6L antibody (C-Term)**



[Go to Product page](#)

### 1 Image

#### Overview

Quantity:	100 µL
Target:	DGCR6L
Binding Specificity:	C-Term
Reactivity:	Human
Host:	Rabbit
Clonality:	Polyclonal
Conjugate:	This DGCR6L antibody is un-conjugated
Application:	Western Blotting (WB)

#### Product Details

Immunogen:	DGCR6 L antibody was raised in rabbit using the C terminal of DGCR6 as the immunogen
Purification:	Purified

#### Target Details

Target:	DGCR6L
Alternative Name:	DGCR6L ( <a href="#">DGCR6L Products</a> )
Background:	This gene, the result of a duplication at this locus, is one of two functional genes encoding nearly identical proteins that have similar expression patterns. The product of this gene is a protein that shares homology with the Drosophila gonadal protein, expressed in gonadal tissues and germ cells, and with the human laminin gamma-1 chain that functions in cell attachment and migration. This gene is located in a region of chromosome 22 implicated in the

## Target Details

DiGeorge syndrome, one facet of a broader collection of anomalies referred to as the CATCH 22 syndrome. Synonyms: Polyclonal DGCR6L antibody, Anti-DGCR6L antibody, DiGeorge syndrome critical region gene 6-like antibody, FLJ10666 antibody.

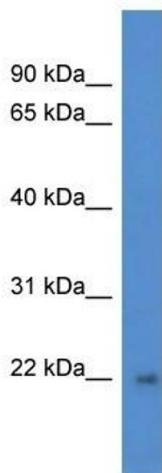
## Application Details

Application Notes:	Optimal conditions should be determined by the investigator.
Comment:	DGCR6L Blocking Peptide, catalog no. 33R-7701, is also available for use as a blocking control in assays to test for specificity of this DGCR6L antibody
Restrictions:	For Research Use only

## Handling

Format:	Lyophilized
Concentration:	Lot specific
Buffer:	Lyophilized powder. Add 50 $\mu$ L of distilled water. Final antibody concentration is 1 mg/mL in PBS buffer.
Handling Advice:	Avoid repeated freeze/thaw cycles.
Storage:	4 °C/-20 °C
Storage Comment:	Store at 4 °C, following reconstitution, aliquot and store at -20 °C.

## Images



### Western Blotting

**Image 1.** Western Blot showing DGCR6L antibody used at a concentration of 1  $\mu$ g/ml against Fetal Brain Lysate