

Datasheet for ABIN926631  
**anti-Cathepsin S antibody (N-Term)**



[Go to Product page](#)

1 Image

## Overview

Quantity:	100 µL
Target:	Cathepsin S (CTSS)
Binding Specificity:	N-Term
Reactivity:	Human
Host:	Rabbit
Clonality:	Polyclonal
Conjugate:	This Cathepsin S antibody is un-conjugated
Application:	Western Blotting (WB)

## Product Details

Immunogen:	CTSS antibody was raised in rabbit using the N terminal of CTSS as the immunogen
Purification:	Purified

## Target Details

Target:	Cathepsin S (CTSS)
Alternative Name:	<a href="#">CTSS (CTSS Products)</a>
Background:	The protein encoded by this gene, a member of the peptidase C1 family, is a lysosomal cysteine proteinase that may participate in the degradation of antigenic proteins to peptides for presentation on MHC class II molecules. The encoded protein can function as an elastase over a broad pH range in alveolar macrophages. Alternatively spliced transcript variants encoding distinct isoforms have been found for this gene. Synonyms: Polyclonal CTSS antibody, Anti-

## Target Details

CTSS antibody, cathepsin S antibody, MGC3886 antibody.

Pathways: [Activation of Innate immune Response, Toll-Like Receptors Cascades](#)

## Application Details

Application Notes: Optimal conditions should be determined by the investigator.

Comment: CTSS Blocking Peptide, catalog no. 33R-7628, is also available for use as a blocking control in assays to test for specificity of this CTSS antibody

Restrictions: For Research Use only

## Handling

Format: Lyophilized

Concentration: Lot specific

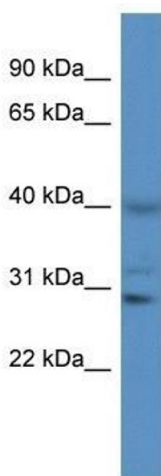
Buffer: Lyophilized powder. Add 50  $\mu$ L of distilled water. Final antibody concentration is 1 mg/mL in PBS buffer.

Handling Advice: Avoid repeated freeze/thaw cycles.

Storage: 4  $^{\circ}$ C/-20  $^{\circ}$ C

Storage Comment: Store at 4  $^{\circ}$ C, following reconstitution, aliquot and store at -20  $^{\circ}$ C.

## Images



### Western Blotting

**Image 1.** Western Blot showing CTSS antibody used at a concentration of 1  $\mu$ g/ml against Jurkat Cell Lysate