

Datasheet for ABIN926701
anti-Desmoglein 3 antibody (C-Term)



[Go to Product page](#)

1 Image

Overview

Quantity:	100 µL
Target:	Desmoglein 3 (DSG3)
Binding Specificity:	C-Term
Reactivity:	Human
Host:	Rabbit
Clonality:	Polyclonal
Conjugate:	This Desmoglein 3 antibody is un-conjugated
Application:	Western Blotting (WB)

Product Details

Immunogen:	DSG3 antibody was raised in rabbit using the C terminal of DSG3 as the immunogen
Purification:	Purified

Target Details

Target:	Desmoglein 3 (DSG3)
Alternative Name:	DSG3 (DSG3 Products)
Background:	<p>Desmosomes are cell-cell junctions between epithelial, myocardial, and certain other cell types. Desmoglein 3 is a calcium-binding transmembrane glycoprotein component of desmosomes in vertebrate epithelial cells. Currently, three desmoglein subfamily members have been identified and all are members of the cadherin cell adhesion molecule superfamily. These desmoglein gene family members are located in a cluster on chromosome 18. This protein has been</p>

Target Details

identified as the autoantigen of the autoimmune skin blistering disease pemphigus vulgaris.
Synonyms: Polyclonal DSG3 antibody, Anti-DSG3 antibody, desmoglein 3 antibody, CDHF6 antibody, DKFZp686P23184 antibody, PVA antibody.

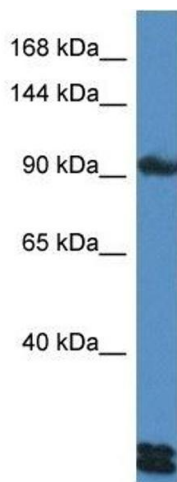
Application Details

Application Notes:	Optimal conditions should be determined by the investigator.
Comment:	DSG3 Blocking Peptide, catalog no. 33R-4480, is also available for use as a blocking control in assays to test for specificity of this DSG3 antibody
Restrictions:	For Research Use only

Handling

Format:	Lyophilized
Concentration:	Lot specific
Buffer:	Lyophilized powder. Add 50 μ L of distilled water. Final antibody concentration is 1 mg/mL in PBS buffer.
Handling Advice:	Avoid repeated freeze/thaw cycles.
Storage:	4 °C/-20 °C
Storage Comment:	Store at 4 °C, following reconstitution, aliquot and store at -20 °C.

Images



Western Blotting

Image 1. Western Blot showing DSG3 antibody used at a concentration of 1 μ g/ml against HepG2 Cell Lysate