

Datasheet for ABIN926705
anti-Cathepsin L2 antibody (C-Term)



[Go to Product page](#)

1 Image

Overview

Quantity:	100 µL
Target:	Cathepsin L2 (CTSL2)
Binding Specificity:	C-Term
Reactivity:	Human
Host:	Rabbit
Clonality:	Polyclonal
Conjugate:	This Cathepsin L2 antibody is un-conjugated
Application:	Western Blotting (WB)

Product Details

Immunogen:	CTSL2 antibody was raised in rabbit using the C terminal of CTSL2 as the immunogen
Purification:	Purified

Target Details

Target:	Cathepsin L2 (CTSL2)
Alternative Name:	CTSL2 (CTSL2 Products)
Background:	The protein encoded by this gene, a member of the peptidase C1 family, is a lysosomal cysteine proteinase that may play an important role in corneal physiology. This gene is expressed in colorectal and breast carcinomas but not in normal colon, mammary gland, or peritumoral tissues, suggesting a possible role for this gene in tumor processes. Alternatively spliced variants, encoding the same protein, have been identified. Synonyms: Polyclonal CTSL2

Target Details

antibody, Anti-CTSL2 antibody, cathepsin L2 antibody, CATL2 antibody, CTSU antibody, CTSV antibody, MGC125957 antibody.

Pathways: [Toll-Like Receptors Cascades](#)

Application Details

Application Notes: Optimal conditions should be determined by the investigator.

Comment: CTSL2 Blocking Peptide, catalog no. 33R-10331, is also available for use as a blocking control in assays to test for specificity of this CTSL2 antibody

Restrictions: For Research Use only

Handling

Format: Lyophilized

Concentration: Lot specific

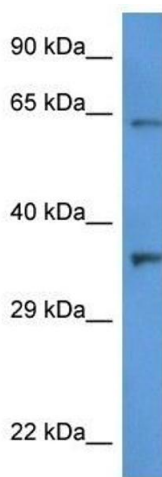
Buffer: Lyophilized powder. Add 50 μ L of distilled water. Final antibody concentration is 1 mg/mL in PBS buffer.

Handling Advice: Avoid repeated freeze/thaw cycles.

Storage: 4 °C/-20 °C

Storage Comment: Store at 4 °C, following reconstitution, aliquot and store at -20 °C.

Images



Western Blotting

Image 1. Western Blot showing CTSL2 antibody used at a concentration of 1 μ g/ml against HT1080 Cell Lysate