

Datasheet for ABIN926713 **anti-RCC1 antibody (C-Term)**



[Go to Product page](#)

1 Image

Overview

Quantity:	100 µL
Target:	RCC1
Binding Specificity:	C-Term
Reactivity:	Human
Host:	Rabbit
Clonality:	Polyclonal
Conjugate:	This RCC1 antibody is un-conjugated
Application:	Western Blotting (WB)

Product Details

Immunogen:	RCC1 antibody was raised in rabbit using the C terminal of RCC1 as the immunogen
Purification:	Purified

Target Details

Target:	RCC1
Alternative Name:	RCC1 (RCC1 Products)
Background:	RCC1 is a Guanine-nucleotide releasing factor that promotes the exchange of Ran-bound GDP by GTP. Involved in the regulation of onset of chromosome condensation in the S phase. Binds both to the nucleosomes and double-stranded DNA. RCC1-Ran complex (together with other proteins) acts as a component of a signal transmission pathway that detects unreplicated DNA. Plays a key role in nucleo-cytoplasmic transport, mitosis and nuclear-envelope assembly.

Target Details

Synonyms: Polyclonal RCC1 antibody, Anti-RCC1 antibody, regulator of chromosome condensation 1 antibody, CHC1 antibody, RCC1-I antibody.

Pathways: [Chromatin Binding](#), [Protein targeting to Nucleus](#)

Application Details

Application Notes: Optimal conditions should be determined by the investigator.

Comment: RCC1 Blocking Peptide, catalog no. 33R-1623, is also available for use as a blocking control in assays to test for specificity of this RCC1 antibody

Restrictions: For Research Use only

Handling

Format: Lyophilized

Concentration: Lot specific

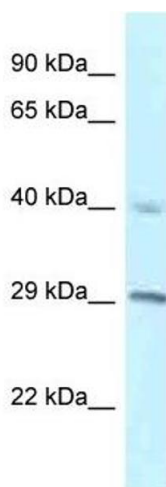
Buffer: Lyophilized powder. Add 50 μ L of distilled water. Final antibody concentration is 1 mg/mL in PBS buffer.

Handling Advice: Avoid repeated freeze/thaw cycles.

Storage: 4 °C/-20 °C

Storage Comment: Store at 4 °C, following reconstitution, aliquot and store at -20 °C.

Images



Western Blotting

Image 1. Western Blot showing RCC1 antibody used at a concentration of 1 μ g/ml against NCI-H226 Cell Lysate